



Changes and Trends in the Child Welfare Caseload in North Carolina

June 2010

D. F. Duncan, III

Jordan Institute for Families
UNC-CH School of Social Work
Chapel Hill, NC

June 2010



UNC
SCHOOL OF SOCIAL WORK

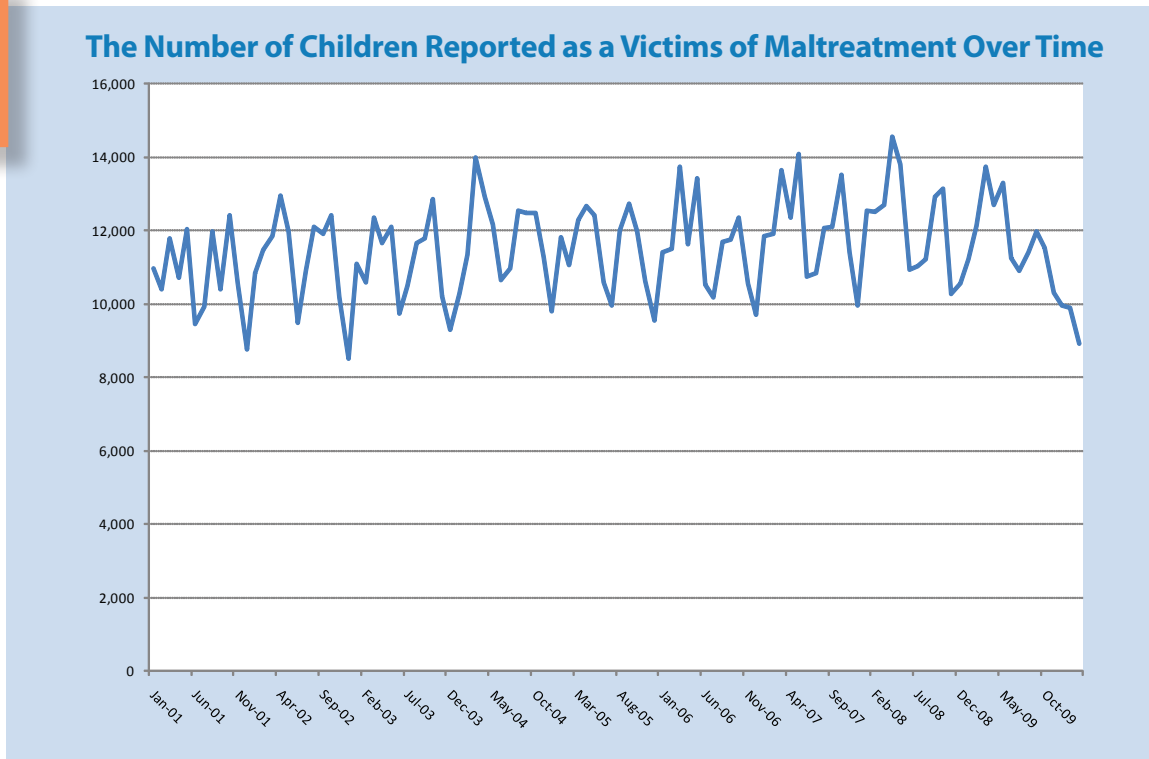
Changes and Trends in the Child Welfare Caseload in North Carolina: June 2010



This report explores changes and trends in the Child Welfare caseload in North Carolina. This analysis is based on data extracted from the Services Information System (SIS) in early June 2010. These extracts are used to construct and maintain a longitudinal file that tracks the experiences of children and youth who have been involved with the child welfare system in North Carolina. The analysis explores changes in the number of children reported as victims of maltreatment, the number of those reports which are substantiated, and the number of children entering foster care. Long-term trends are also discussed.

Figure One illustrates the changes in the number of reports of maltreatment over time (specific monthly numbers can be found in Appendix A, Table One). As the figure indicates, the number of reports of maltreatment received monthly has increased slightly over time. The number of children reported rose slightly from 10,393 in February 2001 to 10,600 in February 2003. By February 2005 the number of reports continued to rise to 11,066 before rising to 11,907 in

Figure 1

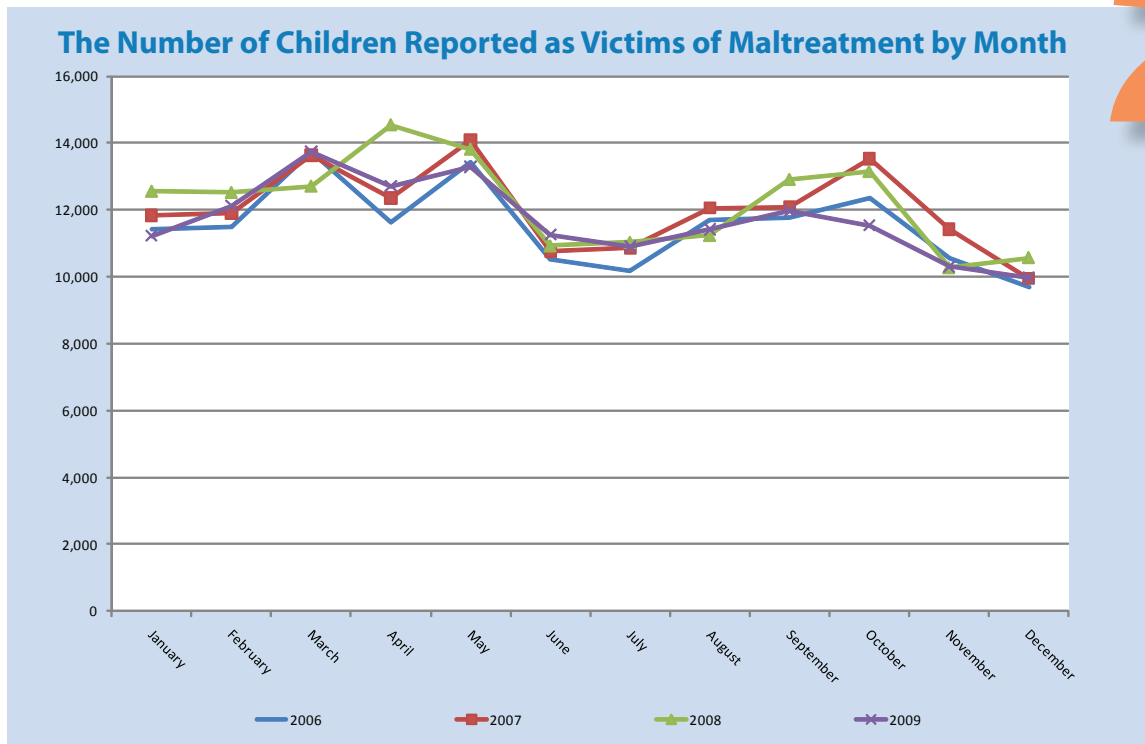


February 2007. By February 2009, the number of reports had risen to 12,118. By October 2009, the number of reports had fallen to 11,530. By January 2010, the number of reports had fallen to 9,901. The number of reports received each month began to rise and by March 2010 the number reached 9,329. The reports tracked in Figure One do not provide a unique count of children per year. There are a number of instances in which a child may have more than one report investigated

within a calendar year. Also, there are some instances where two separate investigations—as indicated by date of case decision on the DSS-5104 form—about an individual child are concluded within a calendar month. Instances where there are separate allegations of maltreatment for an individual child—as indicated by the form identification number—with the same case decision date are collapsed into a single report. Also, state policies require that when a report of maltreatment is received, all children living in the home must be assessed as a possible victim of maltreatment. As a result, the number of children reported as victims of maltreatment could fluctuate based upon the size of families involved, even as the number of reports remains steady.

Figure One also indicates that there is variation from month to month in the number of children reported. That variation is further illustrated in **Figure Two** which shows the pattern of the number of reports received each month by year from January 2006 through November 2009. As the figure indicates, the number of reports received generally peaks around May, then falls in June and July

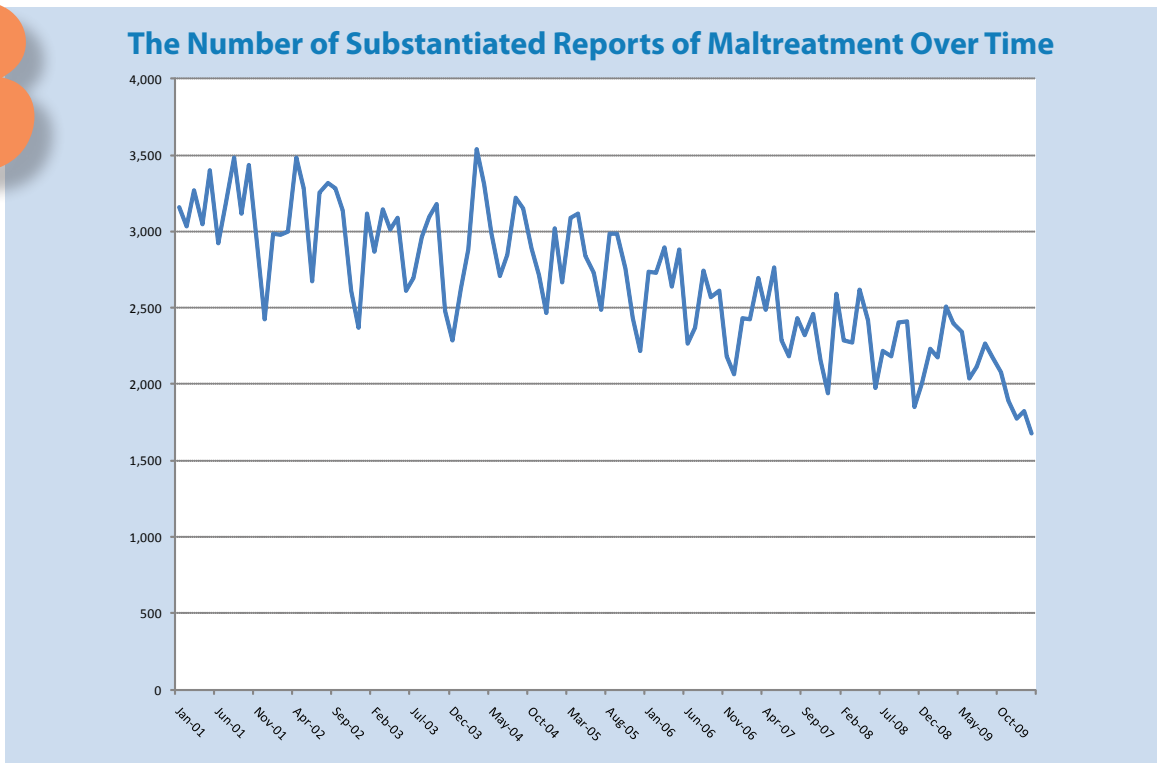
Figure 2



before beginning a slight rise through October. The number of reports then declines through December. One purpose of this figure is to gauge whether there has been a rise in the number of reports received corresponding to the downturn in the state’s economy. The figure does not suggest that there has been a recent increase in the number of reports, although the number of reports received in April 2008 was higher than that for previous years. The number of reports received in May 2008 was slightly lower than that for May 2007. In 2009, the number of reports received each month generally has been lower than that for the three prior years. The figure also suggests that there is a decline in the number of reports between June 2009 and November 2009. Even though the number of reports was lower in November 2009, the number of reports received monthly in August 2009 through October 2009 was higher than the number of reports received in June 2009.

Figure Three illustrates the number of children whose reports of maltreatment was substantiated specific monthly numbers can be found in **Appendix A, Table Two**. A report is considered substantiated if it has a finding of abuse, neglect, abuse and neglect, dependency, or services needed. It does not include instances where the finding was services provided, child protective services no longer needed. Again, these reports are not based on a unique count of children per year. As the figure indicates, the number of children whose report is substantiated has declined over time, from around 3,000 per month in 2000 to around 2,225 per month in 2008-2009. The decline generally corresponds to the implementation of the Multiple Response System (MRS), which resulted in an increase in the number of instances where services were provided to the child or the child's family but were no longer needed when the investigation was completed. Under MRS, investigations

Figure 3



of reports of maltreatment can follow one of two tracks: investigative or family assessment. The investigative track is similar in most respects to the way maltreatment reports were handled prior to the implementation of MRS. The family assessment track, on the other hand, allows and encourages the provision of services to families that would build on their strengths and eliminate the risk of harm to their children. MRS was implemented as a pilot program in ten counties in 2001. In 2003, 42 additional counties began applying MRS policies. MRS was expanded statewide in January 2006. The apparent decline also could be associated with an increase in the number of instances where the finding is services provided, child protective services no longer needed.

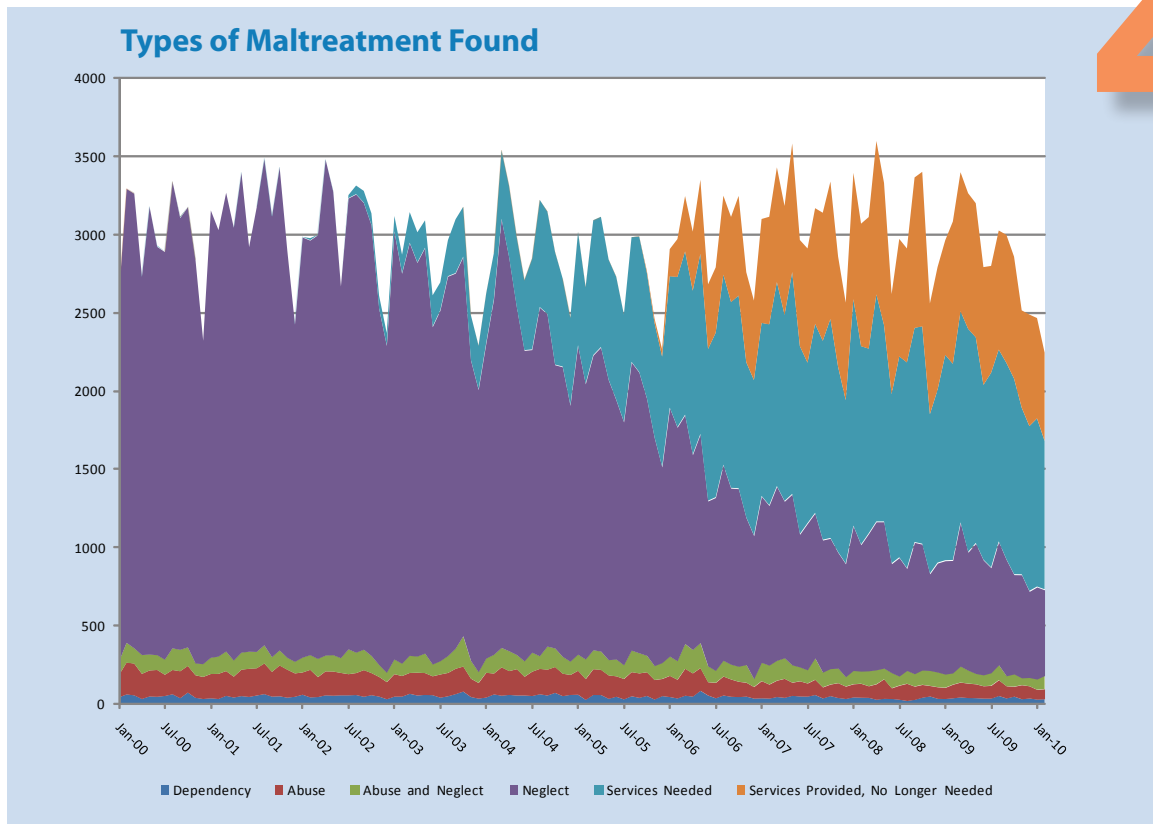
Counties have some flexibility in whether to use the investigative or the family assessment track. According to policy¹, the choice of response should be based on the approach that best provides

¹The policies for investigations are found in Volume 1: Children's Services, Chapter VIII: Child Protective Services, of the NC-DSS Family Services Manual available at <http://info.dhhs.state.nc.us/olm/manuals/dss/csm-60/man/>.

for the child’s safety, permanence, and well being. State policies require that all reports of abuse follow the investigative track. In addition, the policies require that certain reports of neglect—such as those involving a child fatality or where there is medical neglect of a disabled infant—follow the investigative track as well. For other neglect or dependency reports, county departments of social services may use the family assessment response. The family assessments incorporate System of Care (SOC) principles such as involving the family in decisions, developing an individualized plan which builds on the family’s strengths, fostering interagency collaboration to address the family’s needs, and developing culturally appropriate responses.

Just as the tracks differ in their approach, the findings differ as well. Under the investigative track, findings for abuse, neglect, or dependency are classified as either substantiated or unsubstantiated. For reports handled through the family assessment track, the findings can be services needed; services recommended; services provided, protective services no longer needed; and services not recommended. The finding of services needed is made when there are questions about the frequency and severity of maltreatment, current safety issues, if there is a risk of harm in the future, or if the child is in need of protective services. The finding of services provided, protective services no longer needed is used if, during the assessment, a determination was made that the threat to the child’s safety or the risk of future harm were great enough to require the provision of involuntary services, but the problems were addressed and services no longer required at the end of the assessment period.

The changes in the type of maltreatment found over time are shown in **Figure Four**. In addition to the types presented in Figure Three (e.g., abuse, neglect, abuse and neglect, dependency, and



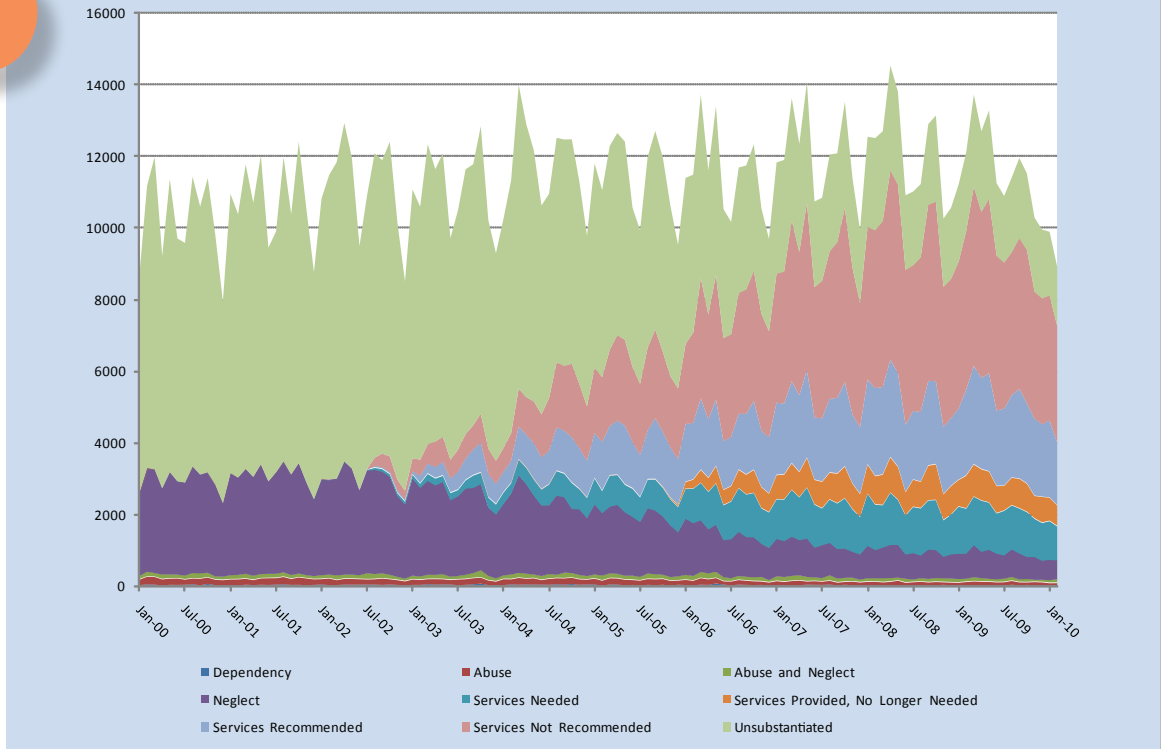
4 Figure

services needed), this figure contains the count of children whose maltreatment investigation found that services were provided to the child or family during the protective services investigation but that child protective services are no longer needed. These reports do not provide a unique count of children per year. If multiple reports are received for a specific incident, those reports are counted separately instead of being combined into the findings of a single investigation. Specific monthly numbers can be found in **Appendix A, Table Three**. As the figure indicates, there has been a decline in the number of children found to be victims of neglect. This decline corresponds with an increase in the number of children where the investigation into the maltreatment concluded that services were needed. In mid-2006, there was also an increase in the number of maltreatment investigations that concluded that as the result of the services provided during the protective services investigation, no additional services were needed. In addition to the decrease in the number of instances where children and youth were found to be victims of neglect, there is a slight decrease over time in the number of children who were found to be to be victims of abuse.

Figure Five illustrates findings from the investigation of maltreatment reports have changed over time. As the figure indicates, while there has been a decrease in the findings of abuse,

Figure 5

The Findings from Investigations of Children Reported as Victims of Maltreatment

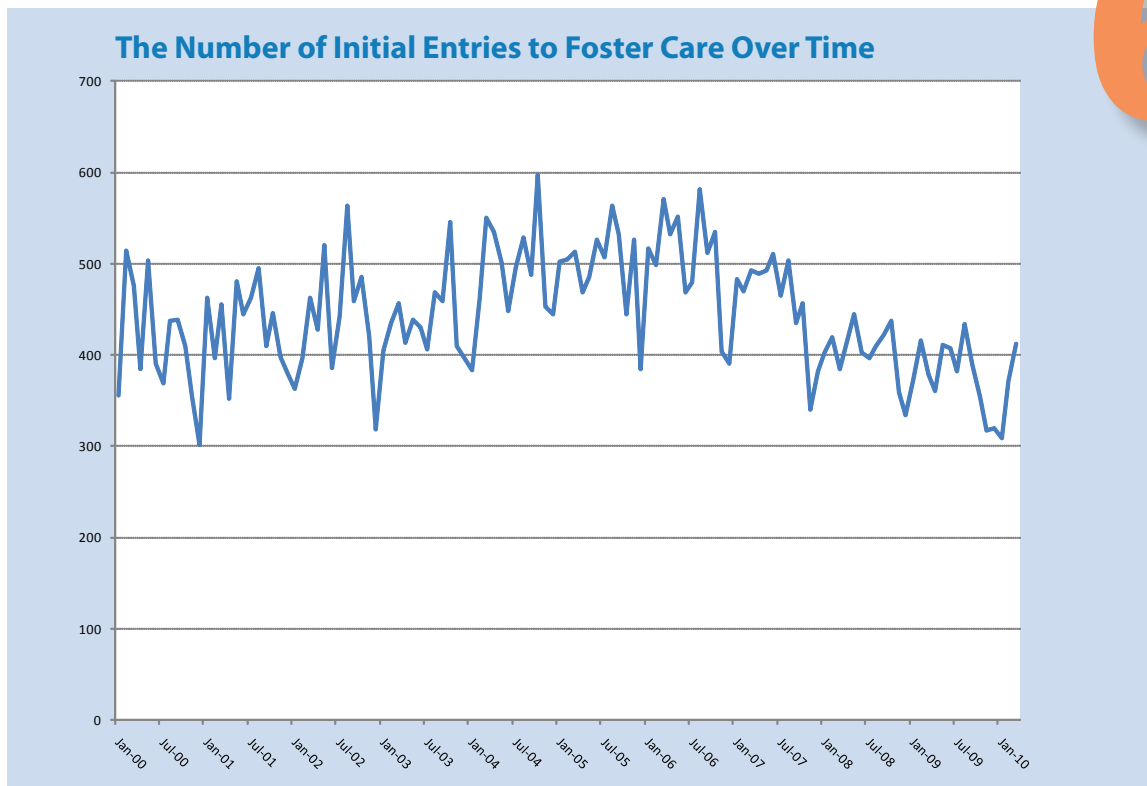


neglect, abuse and neglect, and dependency, there has also has been a decrease in the number of unsubstantiations. This decline in unsubstantiations is likely due to a decrease in the number of investigations routed through the investigative track. That notion is further supported by the increase in the number of findings of services not recommended, an outcome of the

family assessment track. Figure Five also shows an increasing number of findings of services recommended. The increase reflects the growth of MRS. Even after the expansion of MRS statewide in 2006, the number of findings of services recommended has continued to grow. As Figure Four suggested earlier, the monthly sum of findings of abuse; neglect; abuse and neglect; dependency; services needed; and services provided, protective services no longer needed, has remained fairly steady over time. With the expansion of MRS, there appears to have been an increase in the number of families and children recommended for services above the number of children determined to be victims of maltreatment.

Figure Six reports the number of children entering foster care for the first time since January 2000. According to the figure, the number of children entering foster care generally ranged between 400 and 500 per month between 2000 and 2004. There appears to have been a slight increase between 2005 and 2007, when the number of children entering care centered around 500 per month. In mid 2007, the number entering each month began to fall and has ranged between a high of 503 children in August 2007 to a low of 334 in December 2008. The reason for these fluctuations is not clear. The figure indicates there is month-to-month as well as seasonal variation. The number of children entering foster care for the first time tends to reach a low point in December. In December 2000, only 301 children entered foster care for the first time. In December 2002, 318 children entered care for the first time. In 2005, 384 children entered care for the first time. In December 2008, 334 entered care for the first time. Also, according to the chart, October seems to be associated with a large number of children entering care for the first time. In October 2004, 597 entered foster care. That compares with 545 entering care for the first time in October 2003 and 535 entering care for the first time in October 2006.

6 Figure



Exits To Adoption

Children and youth remain in foster care for varying lengths of time. The ways that children and youth exit care vary as well. The types of exits include reunification, adoption, guardianship, emancipation, as well as other means. **Figure Seven** reports the percentage of children remaining in care as well as the types of exit at different time points for children and youth who entered foster care for the first time in State Fiscal Year (SFY) 2000-2001. As the figure indicates, 180 days after entering foster care, 72 % of the 4,904 children who entered care that fiscal year remained in care, while 17 % were reunified and 3% exited through a guardianship with a relative or other adult. The figure also illustrates that two years after entry, only 25 % of the children and youth remained in care, while 40 % were reunified. At the same time, eight percent were adopted and 10 % left through guardianship. About one percent of the youth who entered care in SFY 2000-2001 emancipated or aged out of care two years after entry.

Figure

Exits From Care for 84 Months from Entry for Children Entering Foster Care For the First Time in State Fiscal Year 2000-2001

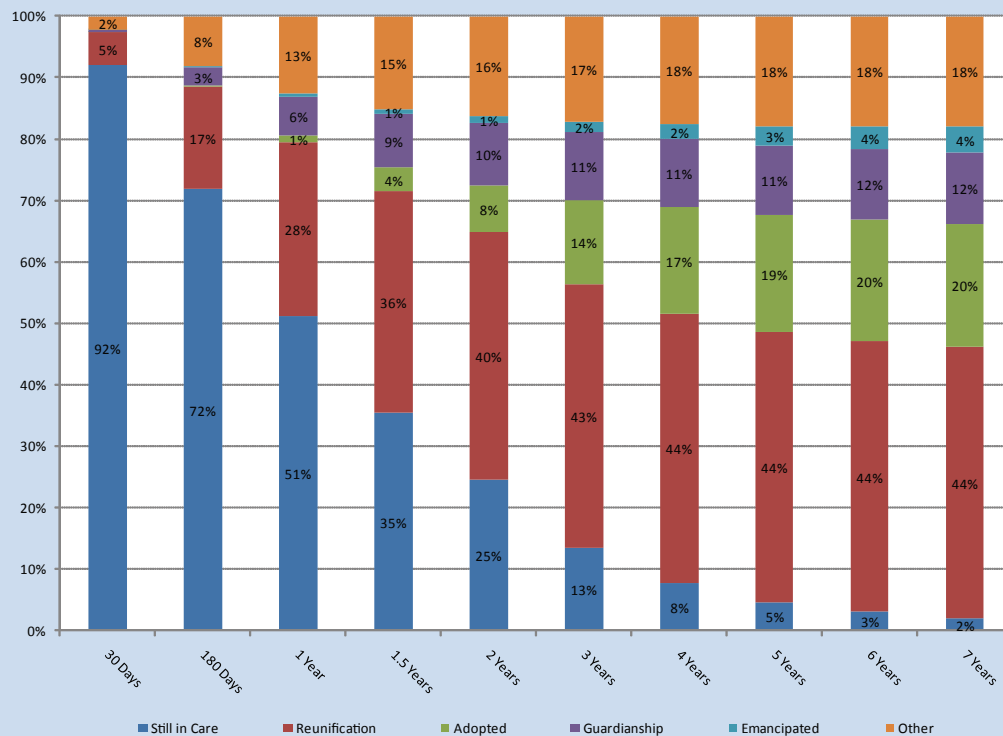
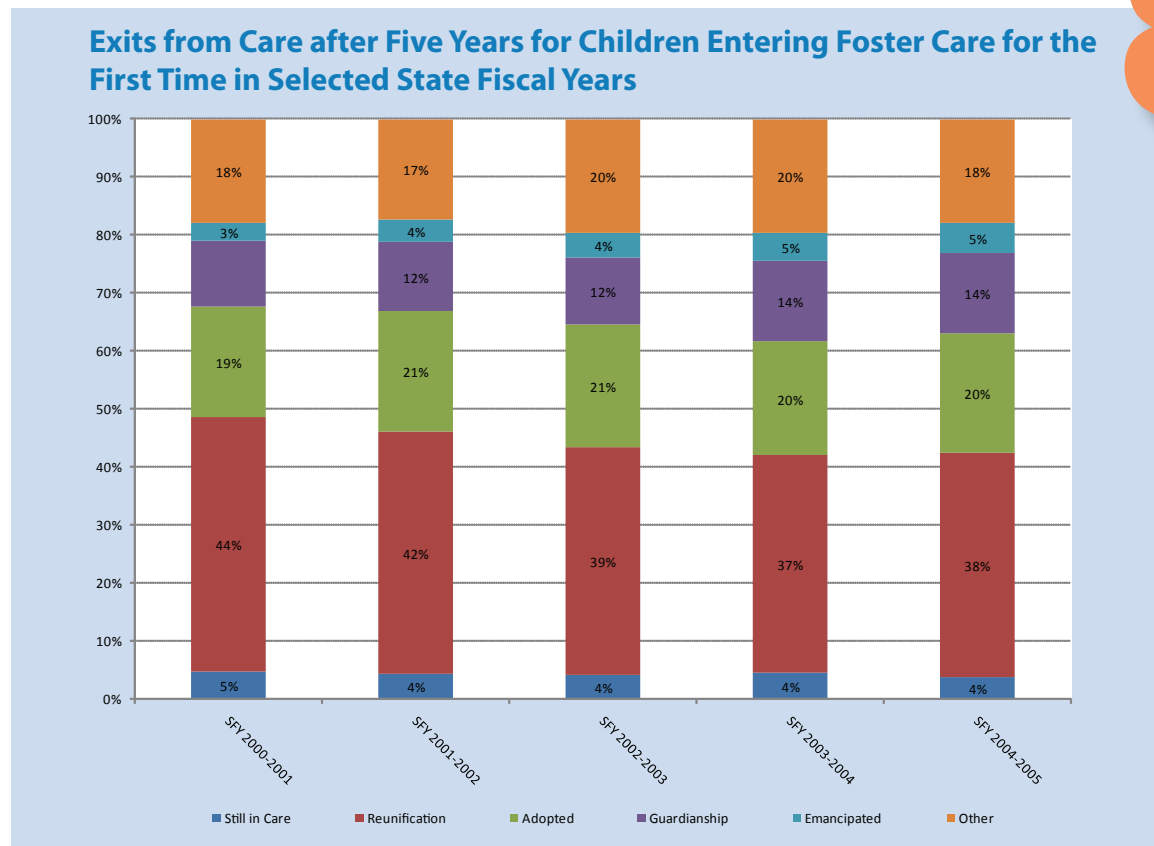


Figure Seven also indicates that the number of children and youth who exit foster care to adoption increased to 19% five years after entry. By year six, the proportion increased slightly to 20% and remained stable to year seven. By the same token, only five percent of the children who entered foster care for the first time in SFY 2000-2001 remained in care after five years. The proportion remaining in care declined to 3% after six years. The percentage of children and youth who were reunited grows to 44% in four years after entry and remains stable in subsequent years.

Figure Eight reports the outcomes after five years for children who entered foster care for the first time in SFY 2000-2001 through SFY 2004-2005. As the figure indicates, about one out of every five children who entered foster care over that time period exited through adoption. Also, around two out of every five children who entered care during those years exited through reunification. As the figure reports, the percentage of children and youth who have exited foster care through adoption five years after entering care ranges from 19% to 21%. Over those years, the percentage of children who exited care through reunification fell from 44% for children who entered care for the first time in SFY 2000-2001 to 37% for those who entered for the first time in SFY 2003-2004. According to the figure, 38% of the children who entered care for the first time in SFY 2004-2005 had been reunified by five years after entry. Exits to guardianship after five years grew from 11% for children who entered care for the first time in SFY 2000-2001 to 14% for children who entered for the first time in SFY 2004-2005. Over that same period, the percentage of youth who aged out and exited care due to emancipation within five years after entry grew from three percent in SFY 2000-2001 to five percent in SFY 2004-2005. The percentage of children remaining in care after five years declined from five percent in SFY 2000-2001 to four percent for those who entered in SFY 2004-2005.

8 Figure

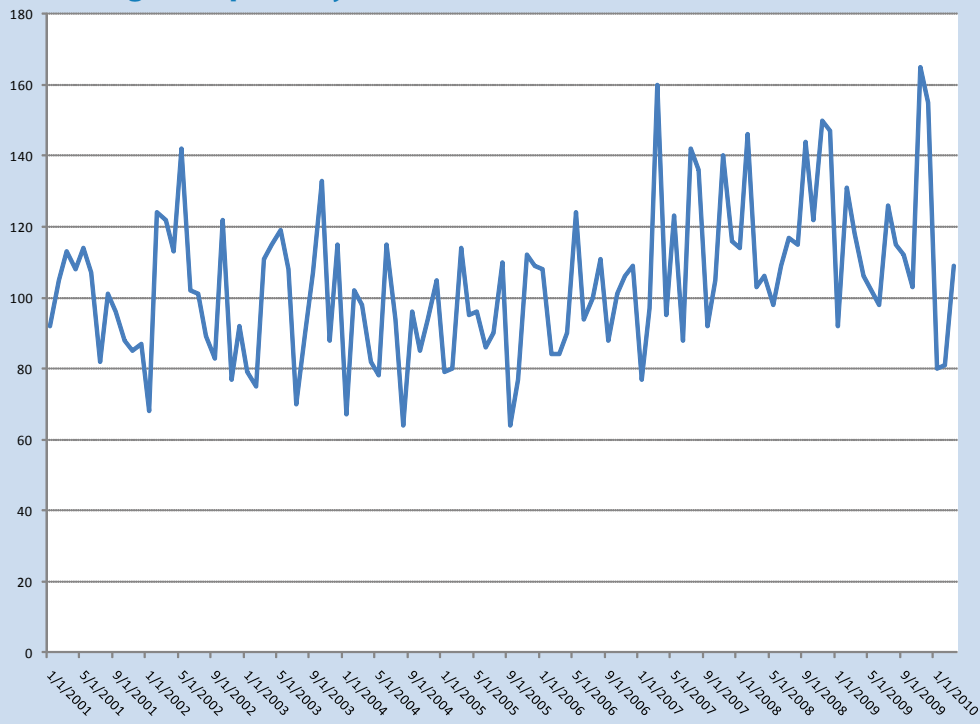


The number of children exiting their first spell in foster care each month through adoption is illustrated in **Figure Nine**. As the figure indicates, the number of children who exited foster care through adoption appeared to fluctuate around 100 children per month between January 2001 and December 2006. In May 2002, 142 children left their first spell in foster care through adoption, while in August 2004 and September 2005 only 64 children left their first spell in care that way.

Between January 2007 and March 2010, the number of children appeared to fluctuate around 120 children each month. In March 2007, 160 children left their first foster care spell through adoption. In November 2009, there were 165 exits through adoption. In January 2007, only 77 children exited their first foster care through adoption. In January 2010, there were 80 children who left their first foster care spell through adoption. The figure shows that there is variation across months. There is also an indication of seasonality as well. The number of children leaving their first foster care spell through adoption tends to be low in January and February. The number appears to be higher in May and June. There also appears to be an increase in October and November, as shown by the spike indicating 133 children left through adoption on October 2003, the 140 children who left through adoption in November 2007, and 150 children who left in November 2008.

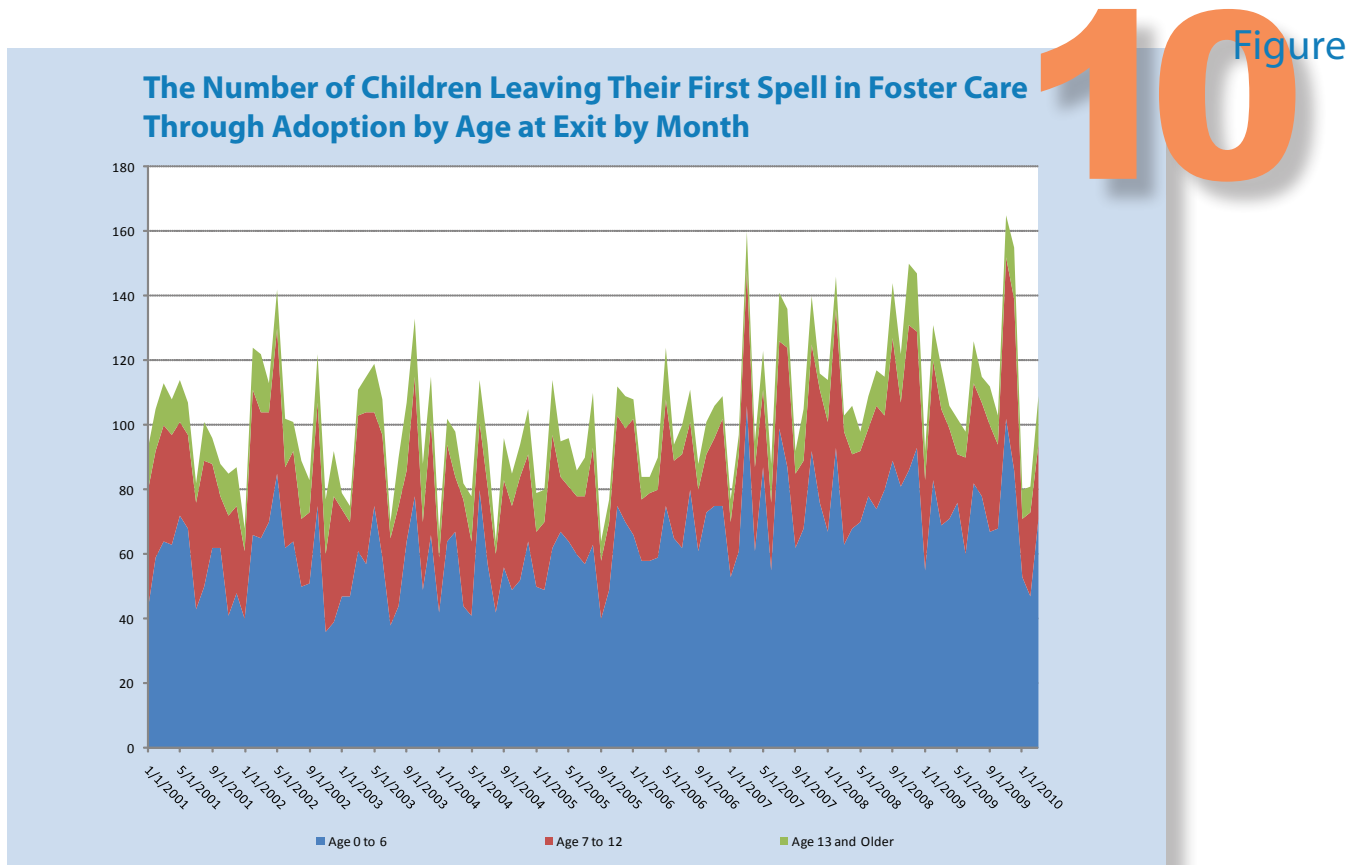
Figure 9

The Number of Children Exiting Their First Spell in Foster Care Through Adoption by Month



Most of the children who leave their first spell in foster care through adoption are under six years old as **Figure Ten** shows. Between January 2001 and March 2010, an average of slightly more than 64 children age birth to six left their first spell in foster care through adoption. That compares with an average of slightly more than 28 children between ages seven and twelve and an average of about 11 children age 13 and older. Over that period, the number of children birth to age six who left their first foster care spell through adoption ranged from 36 in November 2002 to 106 in March 2007. The number of children ages seven through twelve who exited their first spell in foster care through adoption ranged from 15 in May 2009 to 53 in December 2009. The number of children 13 and older who exited their first foster care spell through adoption ranged from four in August 2004 to 21 in September 2003. In November 2009, the month with the highest number of

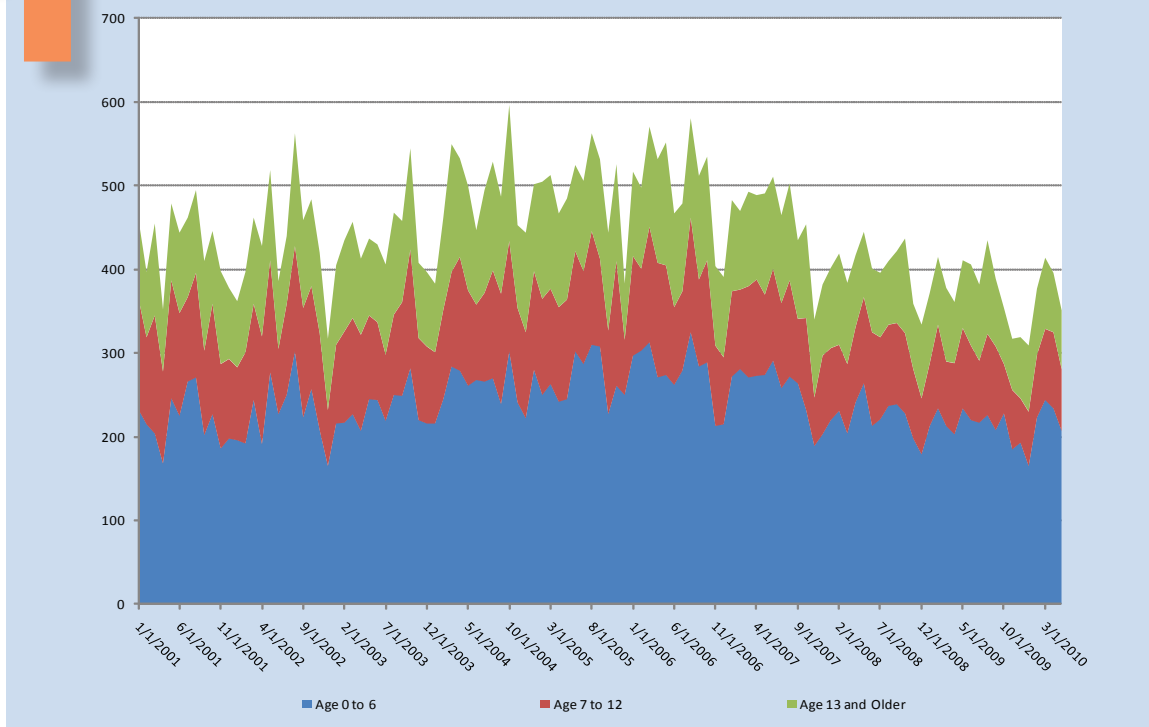
adoptions shown in the figure, 102 children from birth to age six left their first spell in foster care through adoption, 50 children between the ages of seven and twelve left their first spell that way, and 13 children age 13 and older left their first foster care spell through adoption.



The ages of the children who leave foster care through adoption corresponds to the ages of children who enter care as shown in **Figure Eleven**. According to the figure, an average of 241 children between birth and age six enter foster care each month. An average of 104 children between the ages of seven and 12 enter each month, compared with an average of 101 children age 13 and older who enter care monthly. In December 2002, only 165 children from birth to age six entered care. That is the smallest number of children in that age group to enter care between January 2001 and May 2010. The largest number of children in that age group, 325, entered in August 2001. The entries to foster care for children age seven to twelve ranged from 53 in December 2009 to 149 in November 2005. The entries for children 13 and older range from 61 in November 2007 to 163 in October 2004. Most of the children who enter foster care for the first time are under age six. Most of the children who leave through adoption each month are also under age six. There are slightly more children age seven through 12 who enter care each month than the number of children 13 and older. Figure Ten shows that a much higher number of children between the ages of seven and 12 leave through adoption each month than children age 13 and older.

Figure 11

The Number of Children Entering Foster Care by Month by Age at Entry



Summary

Since 2000, there has been a gradual increase in the monthly number of children with reports of maltreatment. In comparing patterns across months for the last several years, there does not appear to have been a sharp increase associated with the current economic downturn. There has been a gradual decrease in the number of reports that are classified as substantiations. That decrease is not as apparent when MRS assessments with a finding of services provided, services no longer needed are included. Also, following the implementation of MRS, there has been a gradual decrease in the combined number of assessments with a finding of unsubstantiated or services not recommended. There has been an increase in the number of cases with an MRS finding of services recommended.

There has also been variation in the number of children and youth entering foster care for the first time. The number of children entering care each month increased slightly between 2005 and 2007. Since 2007, the number of children entering care for the first time each month has fallen and has ranged between 503 in August 2007 and 334 in December 2008.

About one out of every five children who enter foster care leaves their first spell through adoption. Around two out of every five children who enter foster care leaves their first spell through reunification. Also, close to one out of every 20 who enter care leaves through emancipation.

Most of the children who leave their first spell in care through adoption are under age six or younger at the time of exit. Between January 2001 and March 2010, an average of slightly more than 64 children age six or younger left their first spell in foster care through adoption each month. An average of 28 children between seven and 12 left foster care through adoption each month and an average of close to 11 children age 13 and older left their first spell in care through adoption during that same time period.

The ages of the children who leave foster care through adoption corresponds to the ages of children who enter care. An average of 241 children between birth and age six enter foster care each month. An average of 104 children between the ages of seven and 12 enter each month, compared with an average of 101 children age 13 and older who enter care monthly. Most of the children who leave through adoption each month are also under age six. There are slightly more children age seven through 12 who enter care each month than the number of children 13 and older. Figure Ten shows that a much higher number of children between the ages of seven and 12 leave through adoption each month than children age 13 and older.

This research is funded through a contract with the North Carolina Division of Social Services. The views expressed are those of the author. Any errors due to the interpretation of the analysis of the data are the author's alone.

Additional information on the child welfare program at the state or county level is available through the Management Assistance for Child Welfare, Work First, and Food and Nutrition Services web site, <http://ssw.unc.edu/ma/>.

A PDF version of this report can be found at http://sasweb.unc.edu/cgi-bin/broker?_service=default&_program=wrkfirst.help.sas&county=North%20Carolina&label=&help=papers&entry=2&anchor=

This report was designed by Rea Gibson of the UNC-CH School of Social Work.

Appendix A



Table 1

The Number of Children Reported As Maltreated

Month	Number of Children Reported
Jan-01	10,956
Feb-01	10,393
Mar-01	11,785
Apr-01	10,712
May-01	12,037
Jun-01	9,456
Jul-01	9,911
Aug-01	11,982
Sep-01	10,390
Oct-01	12,416
Nov-01	10,548
Dec-01	8,775
Jan-02	10,830
Feb-02	11,483
Mar-02	11,848
Apr-02	12,941
May-02	11,964
Jun-02	9,500
Jul-02	10,917
Aug-02	12,094
Sep-02	11,900
Oct-02	12,412
Nov-02	10,164
Dec-02	8,515
Jan-03	11,080
Feb-03	10,600
Mar-03	12,345
Apr-03	11,649
May-03	12,092
Jun-03	9,728
Jul-03	10,504
Aug-03	11,647
Sep-03	11,786
Oct-03	12,851
Nov-03	10,221
Dec-03	9,302
Jan-04	10,269
Feb-04	11,335
Mar-04	14,004
Apr-04	12,905
May-04	12,170
Jun-04	10,637
Jul-04	10,961
Aug-04	12,525
Sep-04	12,479
Oct-04	12,483
Nov-04	11,295
Dec-04	9,794
Jan-05	11,810
Feb-05	11,066
Mar-05	12,297
Apr-05	12,660
May-05	12,417
Jun-05	10,578
Jul-05	9,942
Aug-05	11,995
Sep-05	12,718
Oct-05	11,974
Nov-05	10,623
Dec-05	9,537
Jan-06	11,407
Feb-06	11,495
Mar-06	13,730

Apr-06	11,616
May-06	13,408
Jun-06	10,534
Jul-06	10,174
Aug-06	11,696
Sep-06	11,752
Oct-06	12,344
Nov-06	10,557
Dec-06	9,701
Jan-07	11,837
Feb-07	11,907
Mar-07	13,632
Apr-07	12,355
May-07	14,080
Jun-07	10,746
Jul-07	10,850
Aug-07	12,056
Sep-07	12,093
Oct-07	13,532
Nov-07	11,415
Dec-07	9,945
Jan-08	12,556
Feb-08	12,519
Mar-08	12,709
Apr-08	14,543
May-08	13,814
Jun-08	10,920
Jul-08	11,026
Aug-08	11,231
Sep-08	12,909
Oct-08	13,147
Nov-08	10,267
Dec-08	10,571
Jan-09	11,223
Feb-09	12,118
Mar-09	13,733
Apr-09	12,709
May-09	13,288

Jun-09	11,260
Jul-09	10,901
Aug-09	11,419
Sep-09	11,961
Oct-09	11,530
Nov-09	10,298
Dec-09	9,963
Jan-10	9,901
Feb-10	8,920
Mar-10	9,329

Table 2

The Number of Substantiations

Month	Number of Children with a Substantiated Report
Jan-01	3,158
Feb-01	3,032
Mar-01	3,271
Apr-01	3,047
May-01	3,399
Jun-01	2,924
Jul-01	3,178
Aug-01	3,486
Sep-01	3,119
Oct-01	3,432
Nov-01	2,900
Dec-01	2,428
Jan-02	2,985
Feb-02	2,977
Mar-02	2,999
Apr-02	3,483
May-02	3,281
Jun-02	2,671
Jul-02	3,253
Aug-02	3,314
Sep-02	3,280
Oct-02	3,136
Nov-02	2,609
Dec-02	2,370
Jan-03	3,119
Feb-03	2,871
Mar-03	3,144
Apr-03	3,015
May-03	3,091
Jun-03	2,611
Jul-03	2,694
Aug-03	2,964
Sep-03	3,098
Oct-03	3,178
Nov-03	2,484
Dec-03	2,289
Jan-04	2,624
Feb-04	2,882
Mar-04	3,541
Apr-04	3,312
May-04	2,985
Jun-04	2,709
Jul-04	2,847
Aug-04	3,222
Sep-04	3,148
Oct-04	2,889
Nov-04	2,718
Dec-04	2,469
Jan-05	3,017
Feb-05	2,664
Mar-05	3,092
Apr-05	3,114
May-05	2,841
Jun-05	2,730
Jul-05	2,488
Aug-05	2,984
Sep-05	2,988
Oct-05	2,756
Nov-05	2,435
Dec-05	2,219
Jan-06	2,734
Feb-06	2,730
Mar-06	2,894
Apr-06	2,641
May-06	2,879
Jun-06	2,268
Jul-06	2,372
Aug-06	2,745
Sep-06	2,569
Oct-06	2,610
Nov-06	2,183
Dec-06	2,069

Jan-07	2,435
Feb-07	2,426
Mar-07	2,697
Apr-07	2,487
May-07	2,762
Jun-07	2,286
Jul-07	2,180
Aug-07	2,429
Sep-07	2,320
Oct-07	2,461
Nov-07	2,154
Dec-07	1,940
Jan-08	2,588
Feb-08	2,286
Mar-08	2,270
Apr-08	2,618
May-08	2,421
Jun-08	1,979
Jul-08	2,220
Aug-08	2,182
Sep-08	2,403
Oct-08	2,413
Nov-08	1,850
Dec-08	2,006
Jan-09	2,230
Feb-09	2,173
Mar-09	2,510
Apr-09	2,397
May-09	2,343
Jun-09	2,038
Jul-09	2,115
Aug-09	2,264
Sep-09	2,179
Oct-09	2,078
Nov-09	1,892
Dec-09	1,774
Jan-10	1,823
Feb-10	1,679
Mar-10	1,700

Table 3

The Number of Reports by Type of Finding (Not Based on a Unique Count of Children; Some Children May Have Multiple Reports Investigated at the Same Time)

Month	Dependency	Abuse	Abuse and Neglect	Neglect	Services Needed	Services Provided, No Longer Needed	Services Recommended	Services Not Recommended	Unsubstantiated
Jan-00	39	143	89	2342	5	0	2	3	6090
Feb-00	58	205	130	2903	0	0	7	0	7879
Mar-00	52	204	102	2907	1	0	1	0	8725
Apr-00	29	161	125	2419	0	0	0	0	6491
May-00	45	167	106	2863	0	0	0	9	8183
Jun-00	43	172	99	2611	4	0	0	0	6785
Jul-00	48	136	101	2607	0	0	0	2	6695
Aug-00	59	156	143	2984	0	0	0	2	8094
Sep-00	34	173	141	2761	6	2	1	7	7481
Oct-00	70	171	123	2814	0	0	1	0	8221
Nov-00	36	145	80	2579	0	0	1	0	6967
Dec-00	29	141	86	2069	0	0	0	0	5630
Jan-01	33	156	108	2861	0	0	0	0	7798
Feb-01	29	161	115	2727	0	0	0	0	7361
Mar-01	49	159	129	2934	0	0	1	2	8511
Apr-01	38	134	107	2768	0	0	0	2	7663
May-01	47	170	113	3069	0	0	0	2	8636
Jun-01	42	181	113	2587	1	0	0	1	6531
Jul-01	51	175	109	2843	0	0	0	0	6733
Aug-01	60	197	120	3109	0	0	0	0	8496
Sep-01	44	159	98	2818	0	0	0	0	7271
Oct-01	46	198	100	3088	0	0	4	3	8977
Nov-01	37	180	80	2602	1	0	0	4	7644
Dec-01	43	150	78	2157	0	0	0	2	6345
Jan-02	56	143	99	2687	0	0	0	9	7836
Feb-02	39	177	98	2651	12	0	0	10	8496
Mar-02	41	128	121	2709	0	0	0	1	8848
Apr-02	52	154	105	3172	0	0	0	0	9458
May-02	50	155	109	2963	4	0	4	4	8675
Jun-02	52	144	99	2376	0	0	4	4	6821
Jul-02	52	136	163	2883	19	0	0	25	7639
Aug-02	54	141	135	2929	55	0	38	235	8507
Sep-02	43	171	135	2856	75	0	42	381	8197
Oct-02	53	142	114	2753	74	0	44	445	8787

Month	Dependency	Abuse	Abuse and Neglect	Neglect	Services Needed	Services Provided, No Longer Needed	Services Recommended	Services Not Recommended	Unsubstantiated
Nov-02	44	126	81	2276	82	0	62	305	7188
Dec-02	27	110	64	2090	79	0	53	247	5845
Jan-03	44	144	98	2735	98	0	84	369	7508
Feb-03	44	132	83	2494	118	0	204	459	7066
Mar-03	62	134	114	2638	196	0	274	543	8384
Apr-03	51	147	107	2517	193	0	311	714	7609
May-03	55	140	129	2592	175	0	374	706	7921
Jun-03	53	121	80	2157	200	0	389	531	6197
Jul-03	37	149	89	2241	178	0	495	626	6689
Aug-03	46	150	112	2426	230	0	596	685	7402
Sep-03	60	163	132	2399	344	0	719	674	7295
Oct-03	76	161	198	2424	319	0	822	812	8039
Nov-03	41	118	118	1921	286	0	648	709	6380
Dec-03	31	100	74	1804	280	2	563	649	5799
Jan-04	38	159	95	2014	318	2	565	669	6409
Feb-04	58	134	124	2271	295	0	618	770	7065
Mar-04	50	182	128	2741	440	0	915	1060	8488
Apr-04	55	153	131	2515	458	0	915	1047	7631
May-04	51	169	95	2220	450	0	1001	1172	7012
Jun-04	51	120	103	1986	449	0	884	1204	5840
Jul-04	48	156	126	1935	582	0	933	1469	5712
Aug-04	59	163	85	2229	686	0	1206	1818	6279
Sep-04	51	166	152	2124	655	3	1188	1815	6325
Oct-04	68	166	123	1811	721	3	1263	2053	6275
Nov-04	47	144	112	1852	563	0	1127	1796	5654
Dec-04	55	128	89	1636	561	0	1027	1525	4773
Jan-05	56	154	107	1975	725	3	1253	1829	5708
Feb-05	23	133	130	1760	618	4	1358	1808	5232
Mar-05	55	165	125	1884	863	0	1373	2131	5701
Apr-05	54	162	121	1943	834	0	1503	2394	5649
May-05	30	150	102	1790	769	2	1638	2393	5543
Jun-05	43	131	112	1657	787	2	1291	2100	4455
Jul-05	26	131	92	1553	686	1	1169	1991	4293
Aug-05	46	155	142	1842	799	1	1358	2316	5336
Sep-05	36	157	133	1794	868	2	1699	2474	5555
Oct-05	48	152	110	1643	803	13	1535	2235	5435
Nov-05	25	125	94	1459	732	28	1407	1986	4767

Month	Dependency	Abuse	Abuse and Neglect	Neglect	Services Needed	Services Provided, No Longer Needed	Services Recommended	Services Not Recommended	Unsubstantiated
Dec-05	47	110	106	1251	705	47	1271	1985	4015
Jan-06	41	136	128	1587	842	175	1615	2238	4645
Feb-06	32	120	123	1493	962	243	1578	2525	4419
Mar-06	50	173	162	1462	1047	355	1991	3362	5128
Apr-06	44	149	154	1246	1048	380	1633	2925	4037
May-06	81	146	164	1333	1155	474	1852	3484	4719
Jun-06	51	85	106	1055	971	415	1361	2880	3610
Jul-06	33	99	81	1106	1053	420	1375	2868	3139
Aug-06	51	122	105	1249	1218	506	1556	3379	3510
Sep-06	43	111	99	1126	1190	546	1693	3476	3468
Oct-06	41	98	101	1136	1234	640	1915	3639	3540
Nov-06	44	89	118	939	993	578	1576	3269	2951
Dec-06	31	74	55	915	994	510	1569	2967	2586
Jan-07	33	110	122	1062	1108	667	2016	3607	3112
Feb-07	31	90	126	1021	1158	690	1974	3692	3125
Mar-07	41	105	132	1112	1307	736	2284	4494	3421
Apr-07	36	122	136	1001	1192	698	2139	4003	3028
May-07	49	84	116	1091	1422	824	2451	4669	3374
Jun-07	45	97	94	848	1202	681	1739	3641	2399
Jul-07	44	84	89	936	1027	733	1766	3844	2327
Aug-07	54	98	141	926	1210	742	2055	4120	2710
Sep-07	32	71	99	845	1273	822	2112	4347	2492
Oct-07	47	74	104	833	1403	881	2350	4869	2971
Nov-07	35	95	98	740	1186	708	1929	4103	2521
Dec-07	29	79	65	722	1045	625	1861	3476	2043
Jan-08	39	84	90	924	1451	810	2365	4268	2525
Feb-08	37	89	83	808	1269	786	2453	4412	2582
Mar-08	36	74	101	877	1182	844	2441	4640	2514
Apr-08	24	99	94	947	1454	984	2714	5287	2940
May-08	30	125	73	936	1257	912	2619	5257	2605
Jun-08	29	68	102	697	1083	641	1879	4330	2091
Jul-08	24	90	63	757	1286	754	1912	4074	2066
Aug-08	16	110	87	652	1317	731	1947	4321	2050
Sep-08	23	85	84	840	1371	965	2360	4924	2257
Oct-08	37	82	97	805	1392	991	2314	5013	2416
Nov-08	45	67	101	618	1019	710	1883	3911	1913
Dec-08	30	74	99	697	1106	787	1898	3886	1994
Jan-09	29	71	90	725	1315	735	1990	4100	2168

Month	Dependency	Abuse	Abuse and Neglect	Neglect	Services Needed	Services Provided, No Longer Needed	Services Recommended	Services Not Recommended	Unsubstantiated
Feb-09	33	87	77	720	1256	913	2399	4427	2206
Mar-09	39	95	107	917	1352	892	2747	5000	2584
Apr-09	35	92	88	754	1428	870	2541	4637	2264
May-09	34	89	71	832	1317	860	2737	4872	2476
Jun-09	31	79	75	734	1119	755	2106	4328	2033
Jul-09	31	82	85	672	1245	686	2151	4080	1869
Aug-09	48	101	100	787	1228	764	2300	3995	2096
Sep-09	32	78	69	743	1257	821	2504	4215	2242
Oct-09	44	63	84	635	1252	782	2241	4291	2138
Nov-09	27	90	49	659	1067	624	2161	3546	2075
Dec-09	32	78	58	551	1055	715	2026	3520	1928
Jan-10	25	62	71	589	1076	644	2154	3497	1783
Feb-10	27	64	90	548	950	566	1753	3268	1654
Mar-10	25	54	74	545	1002	637	1965	3314	1713