



Changes and Trends in the Child Welfare Caseload in North Carolina

March 2010

D. F. Duncan, III

Jordan Institute for Families
UNC-CH School of Social Work
Chapel Hill, NC

March 2010



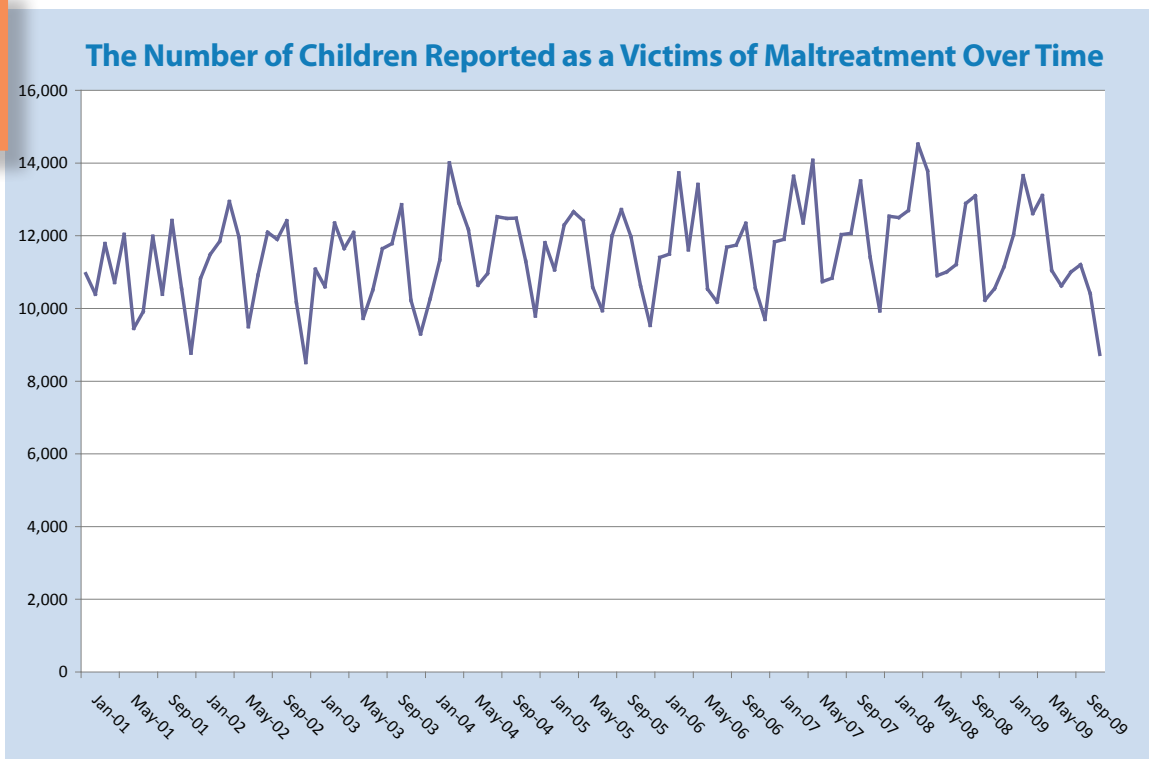
UNC
SCHOOL OF SOCIAL WORK

Changes and Trends in the Child Welfare Caseload in North Carolina: March 2010

This report explores changes and trends in the Child Welfare caseload in North Carolina. This analysis is based on data extracted from the Services Information System (SIS) in early March 2010. These extracts are used to construct and maintain a longitudinal file that tracks the experiences of children and youth who have been involved with the child welfare system in North Carolina. The analysis explores changes in the number of children reported as victims of maltreatment, the number of those reports which are substantiated, and the number of children entering foster care. Long-term trends are also discussed.

Figure One illustrates the changes in the number of reports of maltreatment over time. (Specific monthly numbers can be found in Appendix A, Table One.) As the figure indicates, the number of reports of maltreatment received monthly has increased slightly over time. The number of children reported rose slightly from 10,394 in February 2001 to 10,600 in February 2003. By February 2005 the number of reports continued to rise to 11,063 before rising to 11,902 in February 2007. By February 2009, the number of reports had risen to 12,029. By October 2009, the number of reports had fallen to 10,411. The reports tracked in Figure One do not provide a unique count of children per year. There are a number of instances in which a child may have more than one report investigated within a calendar year. Also, there are some instances where two separate investigations—as indicated by date of case decision on the DSS-5104 form—about an individual child are concluded within a calendar month. Instances where there are separate

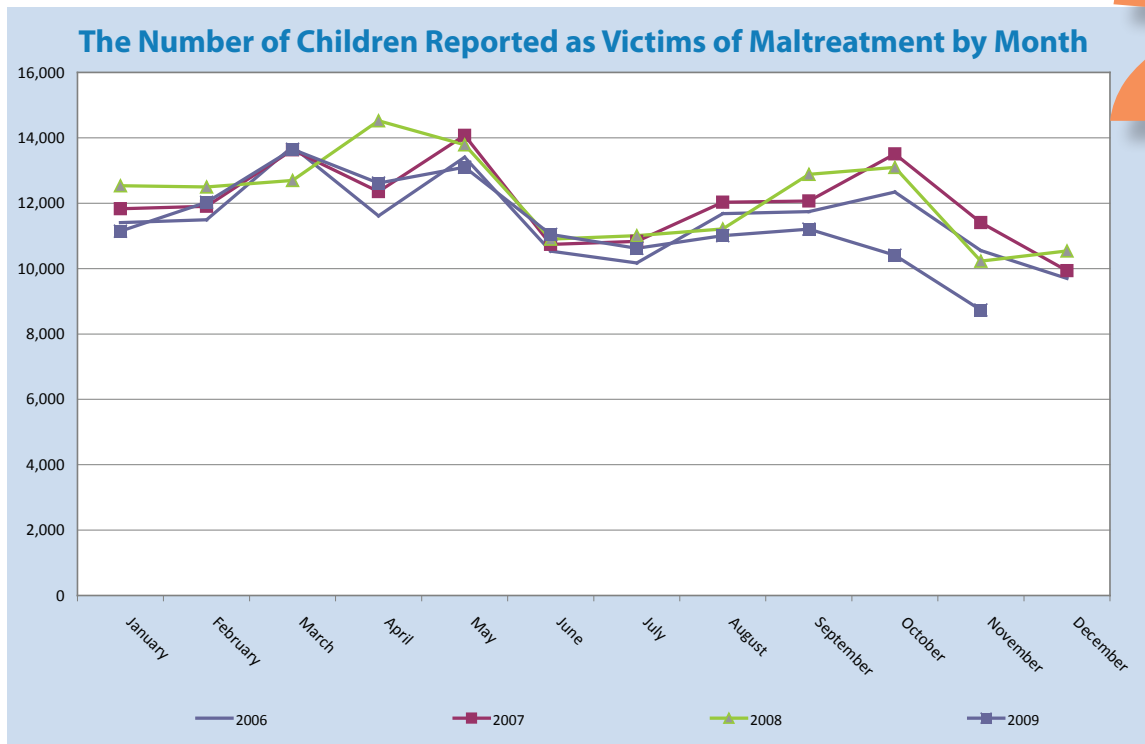
Figure



allegations of maltreatment for an individual child—as indicated by the form identification number—with the same case decision date are collapsed into a single report. Also, state policies require that when a report of maltreatment is received, all children living in the home must be assessed as a possible victim of maltreatment. As a result, the number of children reported as victims of maltreatment could fluctuate based upon the size of families involved, even as the number of reports remains steady.

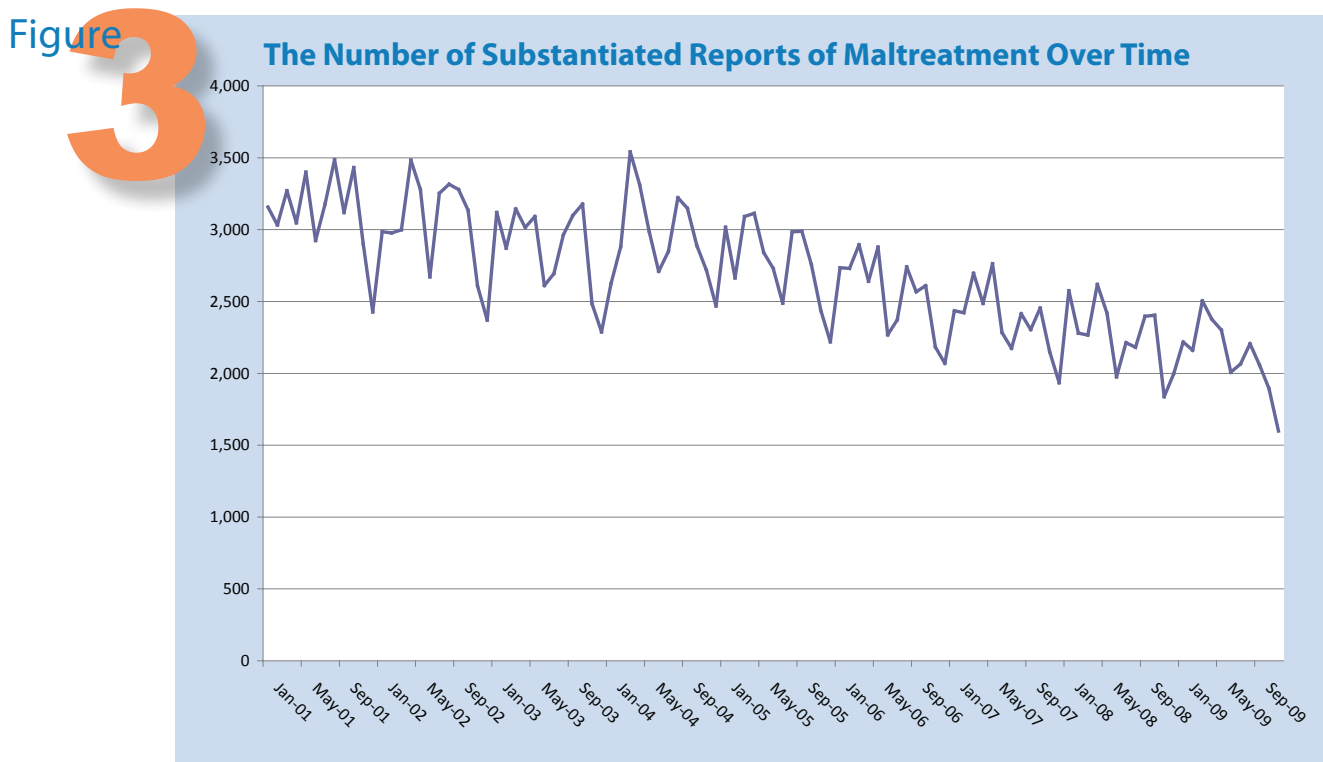
Figure One also indicates that there is variation from month to month in the number of children reported. That variation is further illustrated in **Figure Two** which shows the pattern of

Figure **2**



the number of reports received each month by year from January 2006 through November 2009. As the figure indicates, the number of reports received generally peaks around May, then falls in June and July before beginning a slight rise through October. The number of reports then declines through December. One purpose of this figure is to gauge whether there has been a rise in the number of reports received corresponding to the downturn in the state’s economy. The figure does not suggest that there has been a recent increase in the number of reports, although the number of reports received in April 2008 was higher than that for previous years. The number of reports received in May 2008 was slightly lower than that for May 2007. In 2009, the number of reports received each month generally has been lower than that for the three prior years. The figure also suggests that there is a decline in the number of reports from June 2009 through November 2009. The number of reports for those months, especially the more recent ones, may increase as SIS administrative files are updated

Figure Three illustrates the number of children whose reports of maltreatment was substantiated. (Specific monthly numbers can be found in Appendix A, Table Two.) A report is considered substantiated if it has a finding of abuse, neglect, abuse and neglect, dependency, or services needed.



It does not include instances where the finding was services provided, child protective services no longer needed. Again, these reports are not based on a unique count of children per year. As the figure indicates, the number of children whose report is substantiated has declined over time, from around 3,000 per month in 2000 to around 2,225 per month in 2008-2009. The decline generally corresponds to the implementation of the Multiple Response System (MRS), which resulted in an increase in the number of instances where services were provided to the child or the child’s family but were no longer needed when the investigation was completed. Under MRS, investigations of reports of maltreatment can follow one of two tracks: investigative or family assessment. The investigative track is similar in most respects to the way maltreatment reports were handled prior to the implementation of MRS. The family assessment track, on the other hand, allows and encourages the provision of services to families that would build on their strengths and eliminate the risk of harm to their children. MRS was implemented as a pilot program in ten counties in 2001. In 2003, 42 additional counties began applying MRS policies. MRS was expanded statewide in January 2006. The apparent decline also could be associated with an increase in the number of instances where the finding is services provided, child protective services no longer needed.

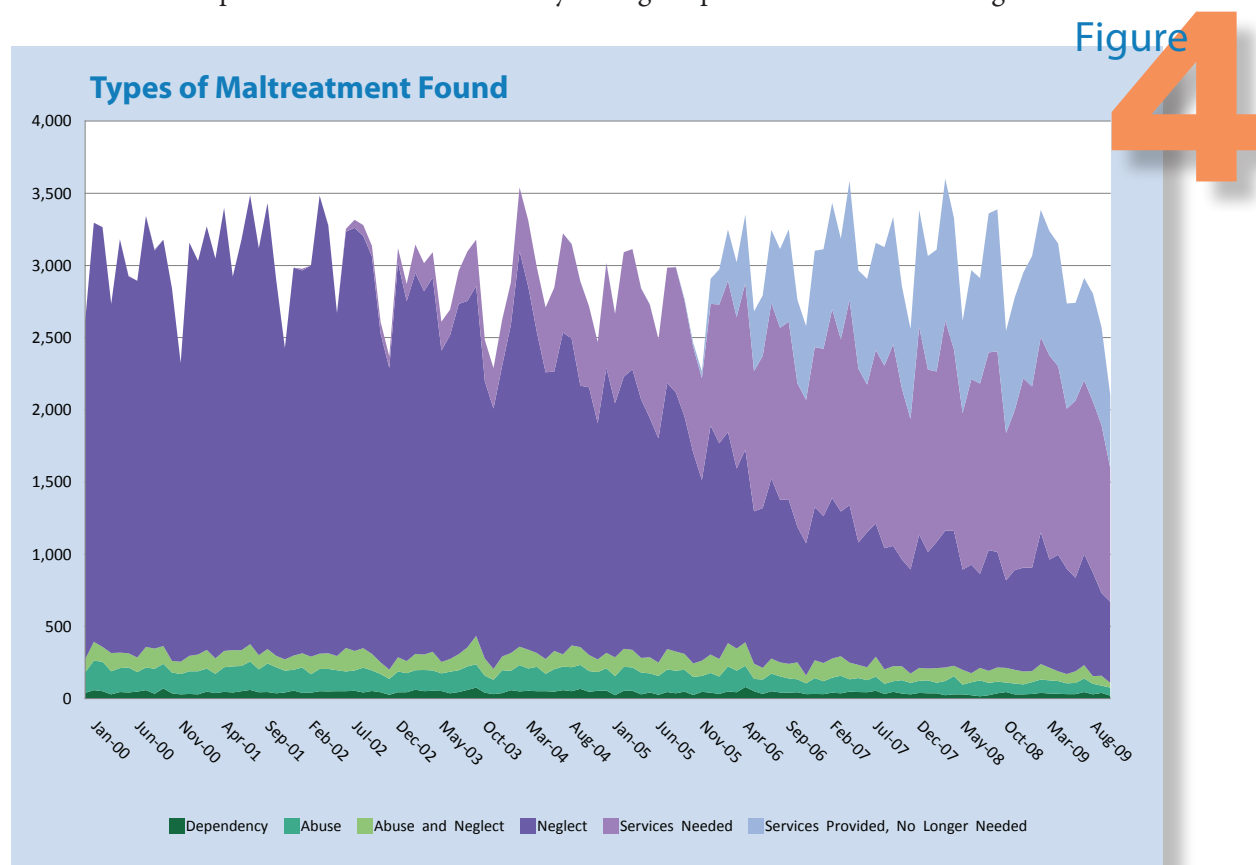
Counties have some flexibility in whether to use the investigative or the family assessment track. According to policy¹, the choice of response should be based on the approach that best provides for the child’s safety, permanence, and well being. State policies require that all reports of abuse

¹The policies for investigations are found in Volume 1: Children’s Services, Chapter VIII: Child Protective Services, of the NC-DSS Family Services Manual available at <http://info.dhhs.state.nc.us/olm/manuals/dss/csm-60/man/>.

follow the investigative track. In addition, the policies require that certain reports of neglect—such as those involving a child fatality or where there is medical neglect of a disabled infant—follow the investigative track as well. For other neglect or dependency reports, county departments of social services may use the family assessment response. The family assessments incorporate System of Care (SOC) principles such as involving the family in decisions, developing an individualized plan which builds on the family’s strengths, fostering interagency collaboration to address the family’s needs, and developing culturally appropriate responses.

Just as the tracks differ in their approach, the findings differ as well. Under the investigative track, findings for abuse, neglect, or dependency are classified as either substantiated or unsubstantiated. For reports handled through the family assessment track, the findings can be services needed; services recommended; services provided, protective services no longer needed; and services not recommended. The finding of services needed is made when there are questions about the frequency and severity of maltreatment, current safety issues, if there is a risk of harm in the future, or if the child is in need of protective services. The finding of services provided, protective services no longer needed is used if, during the assessment, a determination was made that the threat to the child’s safety or the risk of future harm were great enough to require the provision of involuntary services, but the problems were addressed and services no longer required at the end of the assessment period.

The changes in the type of maltreatment found over time are shown in **Figure Four**. In addition to the types presented in Figure Three (e.g., abuse, neglect, abuse and neglect, dependency, and services needed), this figure contains the count of children whose maltreatment investigation found that services were provided to the child or family during the protective services investigation but



that child protective services are no longer. These reports do not provide a unique count of children per year. If multiple reports are received for a specific incident, those reports are counted separately instead of being combined into the findings of a single investigation. Specific monthly numbers can be found in Appendix A, Table Three. As the figure indicates, there has been a decline in the number of children found to be victims of neglect. This decline corresponds with an increase in the number of children where the investigation into the maltreatment concluded that services were needed. In mid-2006, there was also an increase in the number of maltreatment investigations that concluded that as the result of the services provided during the protective services investigation, no additional services were needed. In addition to the decrease in the number of instances where children and youth were found to be victims of neglect, there is a slight decrease over time in the number of children who were found to be to be victims of abuse.

Figure Five illustrates findings from the investigation of maltreatment reports has changed over time. As the figure indicates, while there has been a decrease in the findings of abuse, neglect, abuse and neglect, and dependency, there has also has been a decrease in the number of unsubstantiations. This decline in unsubstantiations is likely due to a decrease in the number of investigations routed through the investigative track. That notion is further supported by the increase in the number of findings of services not recommended, an outcome of the family assessment track. Figure Five also shows an increasing number of findings of services recommended. The increase reflects the growth of MRS. Even after the expansion of MRS statewide in 2006, the number of findings of services recommended has continued to grow. As Figure Four suggested earlier, the monthly sum of findings of abuse; neglect; abuse and neglect; dependency; services needed; and services provided, protective services no longer needed, has remained fairly steady over time. With the expansion of MRS, there appears to have been an increase in the number of families and children recommended for services above the number of children determined to be victims of maltreatment.

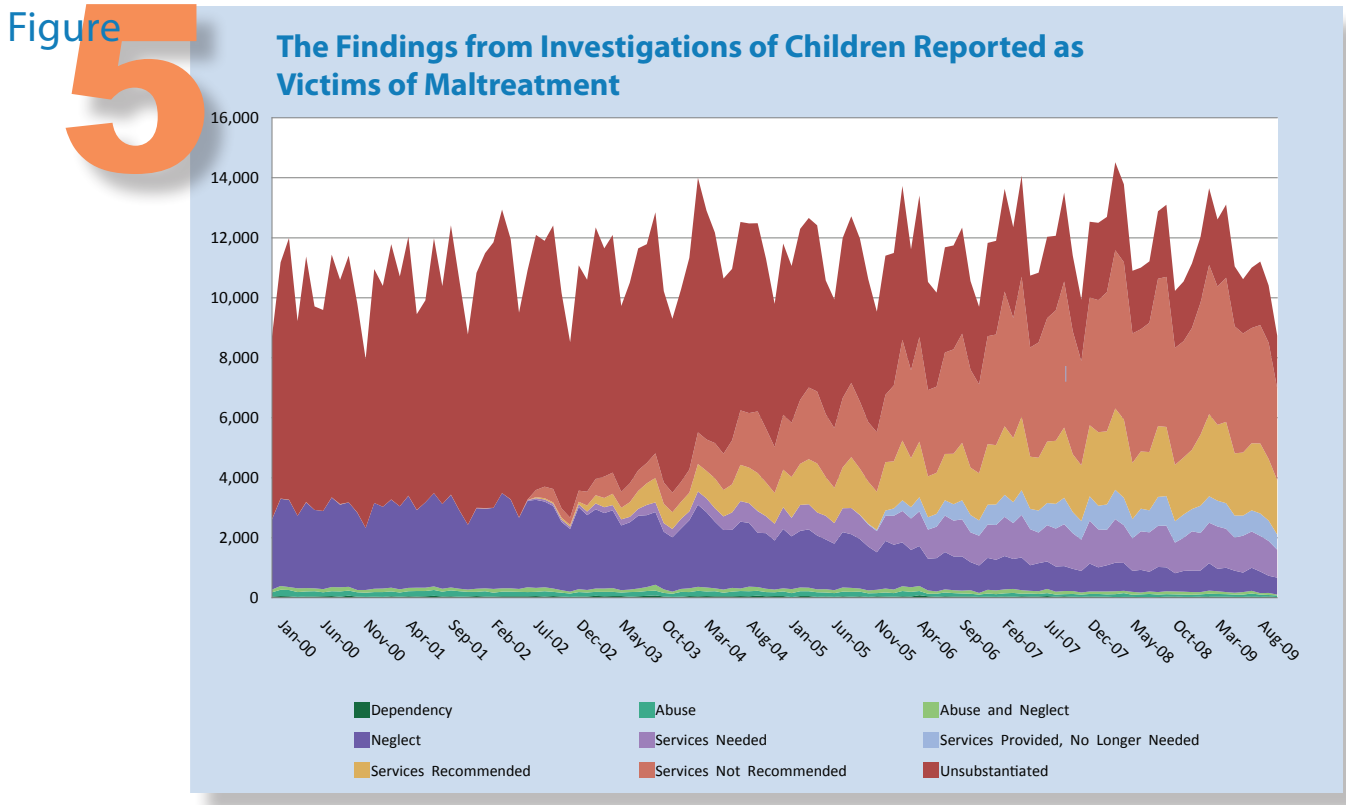
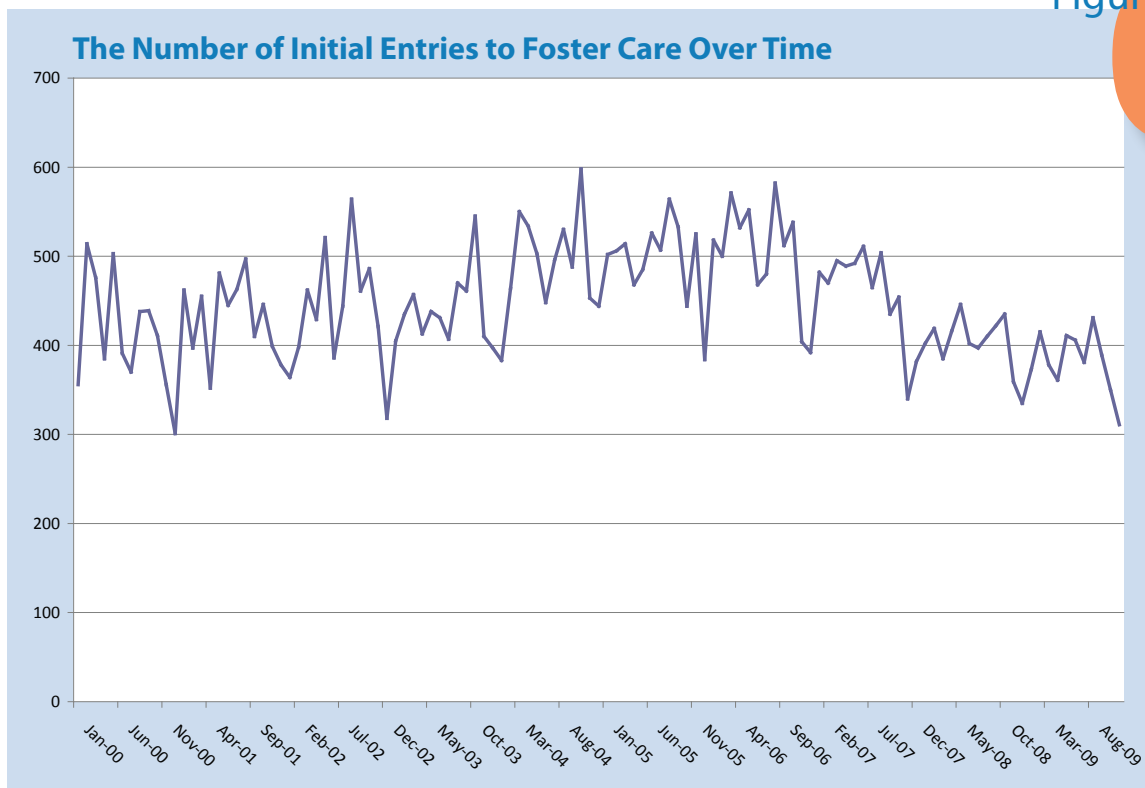


Figure Six reports the number of children entering foster care for the first time since January 2000. According to the figure, the number of children entering foster care generally ranged between 400 and 500 per month between 2000 and 2004. There appears to have been a slight increase between 2005 and 2007, when the number of children entering care centered around 500 per month. In mid 2007, the number entering each month began to fall and has ranged between a high of 504 children in August 2007 to a low of 335 in December 2008. The reason for these fluctuations is not clear. The figure indicates there is month-to-month as well as seasonal variation. The number of children entering foster care for the first time tends to reach a low point in December. In December 2000, only 301 children entered foster care for the first time. In December 2002, 318 children entered care for the first time. In 2005, 384 children entered care for the first time. In December 2008, 335 entered care for the first time. Also, according to the chart, October seems to be associated with a large number of children entering care for the first time. In October 2004, 598 entered foster care. That compares with 545 entering care for the first time in October 2003 and 538 entering care for the first time in October 2006.

Figure 6



The decline in initial entries to care is not consistent across all groups. **Figure Seven** illustrates the changes in the initial entries to foster care for state fiscal years by race. State fiscal years (SFYs), instead of month, are used in order to smooth the lines. As the figure indicates, in SFY 1997-1998, there were 2,699 white children who entered care for the first time, compared with 2,327 African American and 274 children with other racial classifications. The number of white children entering care rose to 2,942 on SFY 2003-2004 and continued climbing to 3,331 in 2005-2006 before falling. In SFY 2007-2008, there were 2,772 white children who entered care for the first time, 73 more than in SFY 1997-1998. The number of African American children entering care for the first time fell to 1,925 in SFY 2000-2001 before rising to 2,278 in SFY 2004-2005. The number of African American

children entering care for the first time began to fall, declining over the next three years to 1,816 in SFY 2007-2008. That number is 511 less than the number of African American children who entered care in SFY 1997-1998.

The number of children with other racial classifications who entered care for the first time has risen gradually over time. In SFY 1999-2000, there were 383 children with other racial classification who entered care for the first time. That number increased to 396 in SFY 2001-2002. By SFY 2004-2005, that number had increased to 535. In SFY 2006-2007, the number had climbed to 647. The number of children who entered care for the first time in SFY 2007-2008 with a racial classification other than white or African American declined to 462, 188 more than for SFY 1997-1998.

Figure

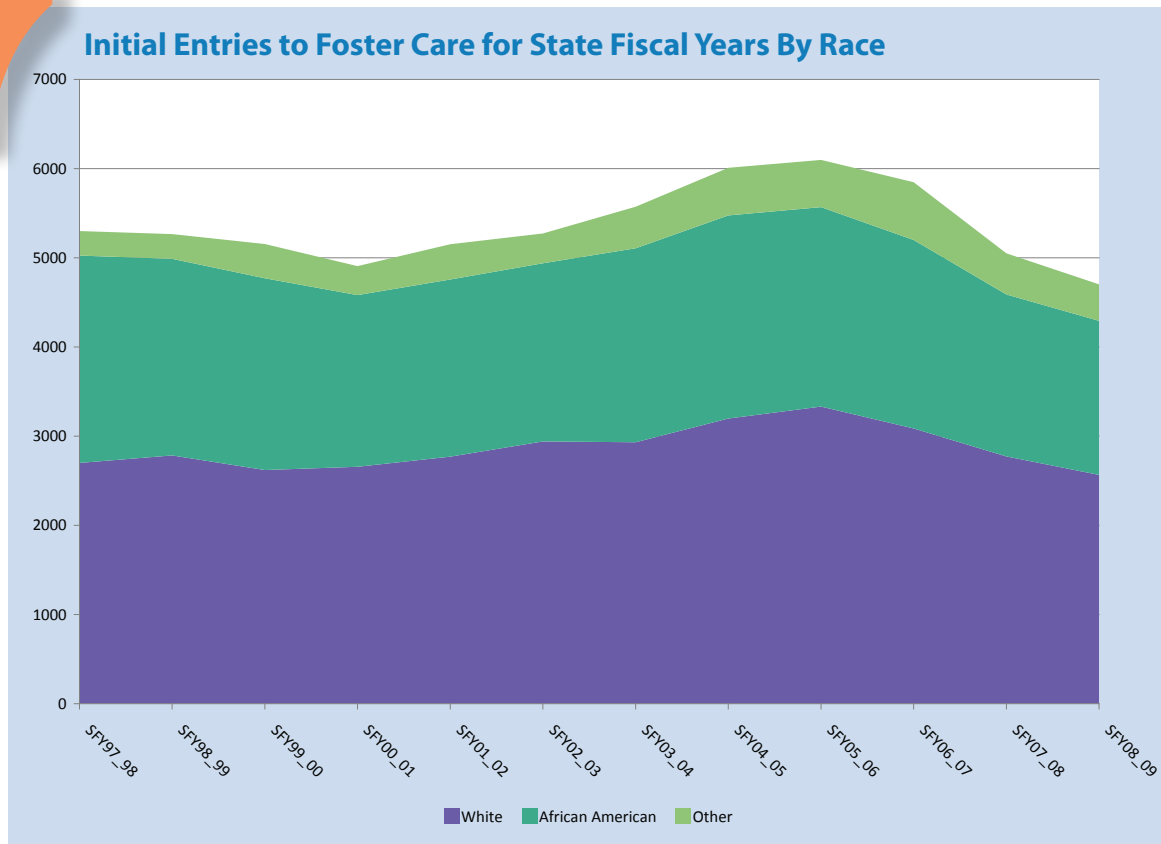
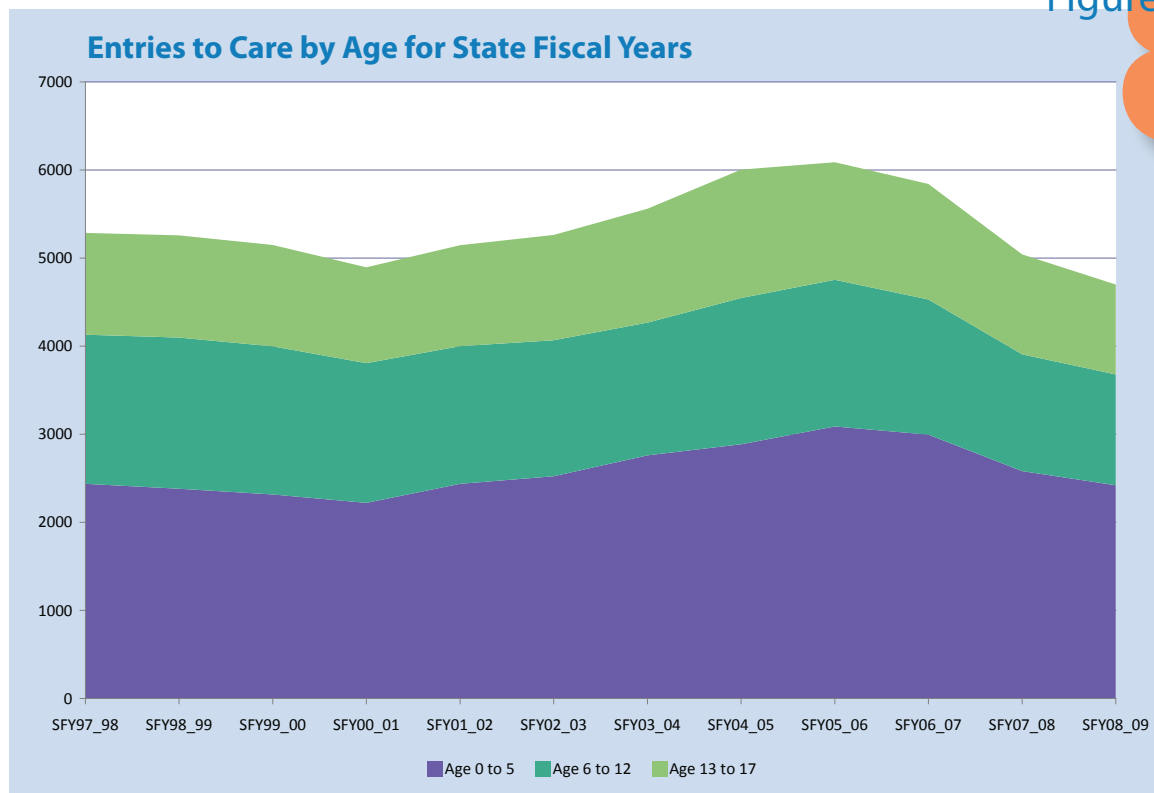


Figure Eight shows the change in initial entries to care by age. As the figure reports, there were 2,438 children ages zero to five who entered foster care for the first time in SFY 1997-1998. That number fell to 2,220 in 2000-2001 before rising to 2,761 in 2003-2004. The number continued to climb to 3,089 in 2005-2006 before falling to 2,582 in SFY 2007-2008, 144 more than entered care for the first time in 1997-1998. The figure also shows that 1,693 children age six to twelve entered care for the first time in SFY 1997-1998. That number fell by more than 100 to 1,587 by SFY 2000-2001. It continued to fall to 1,507 in SFY 2003-2004 before increasing to 1,665 in SFY 2005-2006. Since then, the number has declined over time to 1,325 in SFY 2007-2008, 368 fewer children than in SFY 1997-1998. Also, according to the figure, the number of children age 13 to 17 who entered care for the first time has declined slightly over time. In SFY 1997-1998, there were 1,154 children in this older age group who entered care for the first time. That number climbed to 1,457 in SFY 2004-2005 before falling to 1,136 in SFY 2007-2008, 18 less than entered care for the first time in SFY 1997-1998.



Variations in Exits for Care by Age and Race

Practitioners and policy makers have long recognized that there are variations in the rate of exit from foster care by race. Those rates of exits by race also may vary across age groups. The difference in the rate of exit from foster care between black children and white children is different for the rate of exit for older black youth and white youth. Understanding how exits from foster care vary by age and race can inform and improve practice. To illustrate this variation, this report will examine the rates of exit by age, by race, and then by race within different age groups. The analysis will utilize information on children and youth who entered foster care in North Carolina for the first time in State Fiscal year (SFY) 2006-2007. This fiscal year was selected because it provides sufficient follow-up time to track exits from care. Also, as noted earlier, initial entries to care increased in SFY 2004-2005 and SFY 2005-2006. By SFY 2006-2007, the number of initial entries had begun to fall.

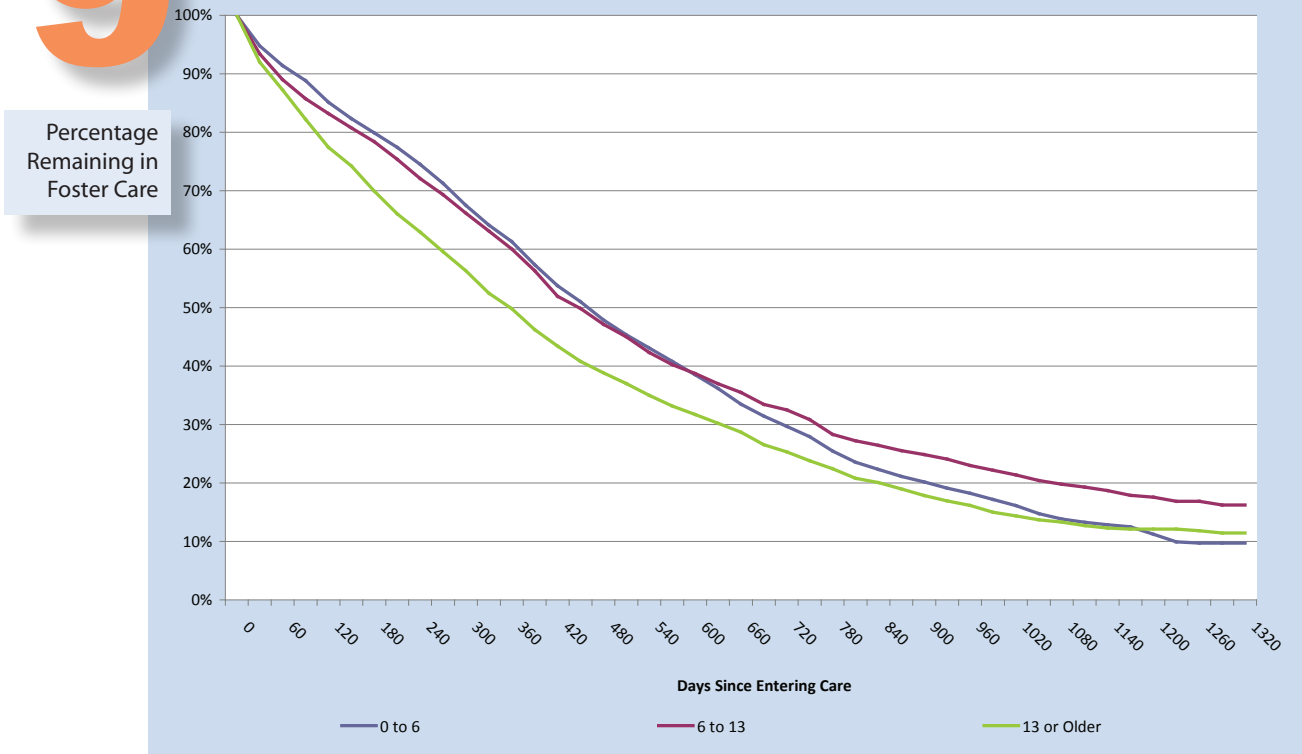
Figure Nine shows the variation in the rate of exit for children and youth who came into foster care for the first time in SFY 2006-2007 grouped by age at entry. As the figure indicates, the 1,311 older children—those who entered foster care as teens—exited care at a slightly faster rate than younger children. The median length of stay in care for teens in SFY 2006-2007 is 357.9 days,

slightly less than a year. The median length of care is illustrated in the figure as the point at which the line showing the percentage of children remaining in care crosses the horizontal grid line labeled 50%. The 2,995 younger children whose age at entry ranged from birth to age six left care at a slower rate, as indicated by the more gradual slope. The point at which the line for the children in the birth to age six age group is about 100 days greater than that for the line tracking the rate of exits for the teens. The median length of stay for the 1,536 children age six to thirteen is 448.1 days, fairly close to that of the younger age group—459.7 days.

Figure

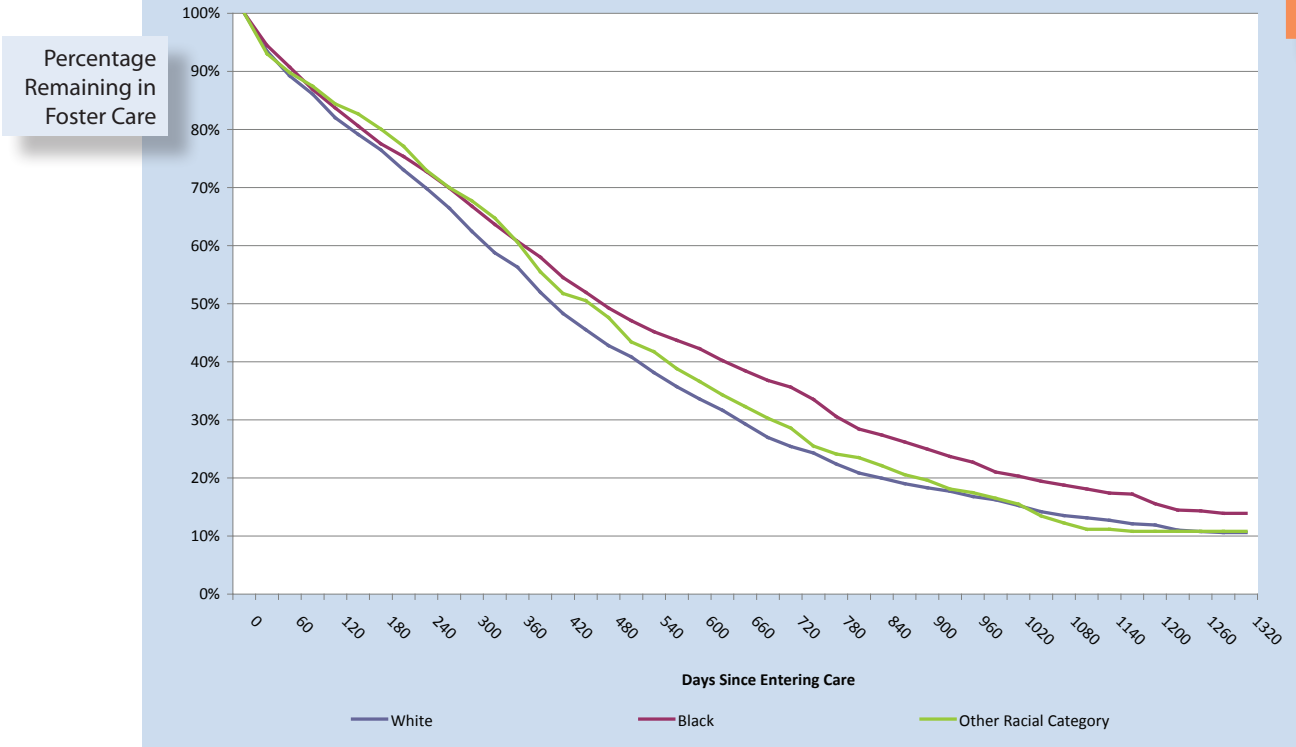
9

The Rate of Exit From Foster Care by Age for the SFY 2006-2007 Entry Cohort



The rate of exit by the race of the child is shown in **Figure Ten**. As the figure indicates, black children tend to remain in care for a longer period of time than white children. According to the figure, the median length of stay for the 3,086 white children and youth who entered foster care for the first time in SFY 2006-2007 is 406.2 days. That is about two months shorter—65.5 days—than the 471.7 day median length of stay for the 2,114 black children and youth. The median length of stay for the 647 children and youth from other racial classifications is 455.5 days. The figure indicates that the rate of exit for foster care for all three groups is fairly close for the first 60 days. At that time, 89% of the white children and youth remained in foster care, compared with 91% of the black children and youth and 90% of the children from other categories. By 360 days, 56% of the white children and youth remained in care, compared with 61% of the black children and youth and 61% of the children and youth from other racial categories. After 720 days—almost two years out—25% of the white children and youth remained in care compared with 36% of the black children and youth and 29% of the other children.

The Rate of Exit from Foster Care by Race for the SFY 2006-2007 Entry Cohort



The rate of exit from foster care by race for children who were under 6 years-old when they had an initial entry to foster care in SFY 2006-2007 is shown in **Figure Eleven**. The figure indicates that white children left foster care at a much faster rate than black children or children from other racial categories. The difference between the median length of stay between the 1,579 white children and 1,023 black children in this age group is 95.5 days—45% longer than the difference between the median length of stay for all white children and youth and all black children and youth during that fiscal year illustrated in Figure Ten. The median length of stay for white children, as indicated by the point at which the line tracking their exit from care crosses the 50% grid line, is 420.3 days. This compares with 515.8 days for black children and 478.3 days for the 393 children from other racial classifications. Again, the rate of exit after 60 days was relatively close for all three groups. At that time point, 90% of the white children remained in care, compared with 93% of the black children and 92% of the children from other categories. At 360 days, the separation was a little greater: 58% of the white children remained in care compared with 65% of the black children and 64% of the children from other racial categories. By 720 days, only 25% of the white children remained in care, compared with 38% of the black children and 28% of the children from other categories.

The difference in the median length of stay for white and black children between age six and age thirteen who entered foster care for the first time is SFY 2006-2007 is 63.2 days, as **Figure Twelve** shows. This is a decline of 32.3 days—more than a month—between the median length of stay for white and black children who were under age six when they entered care that same fiscal year. The figure reports that black children leave care at a slower rate than white

Figure 11

The Rate of Exit From Foster Care by Race for Children Under Age 6 in the SFY 2006-2007 Entry Cohort

Percentage Remaining in Foster Care

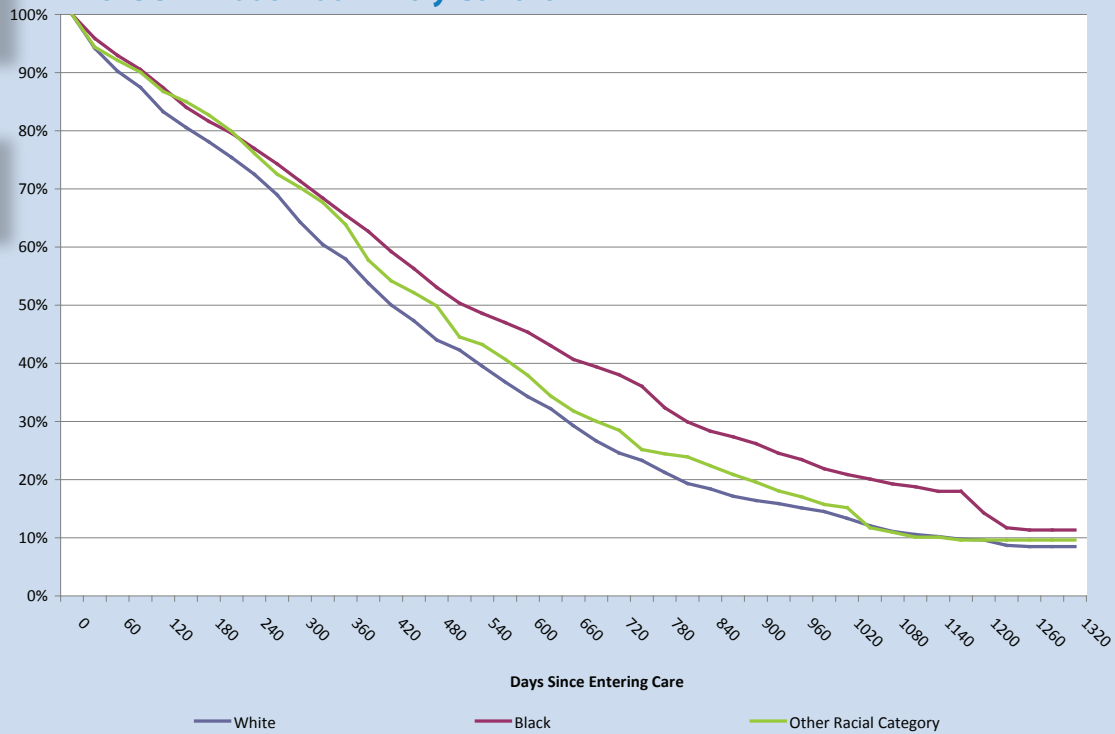
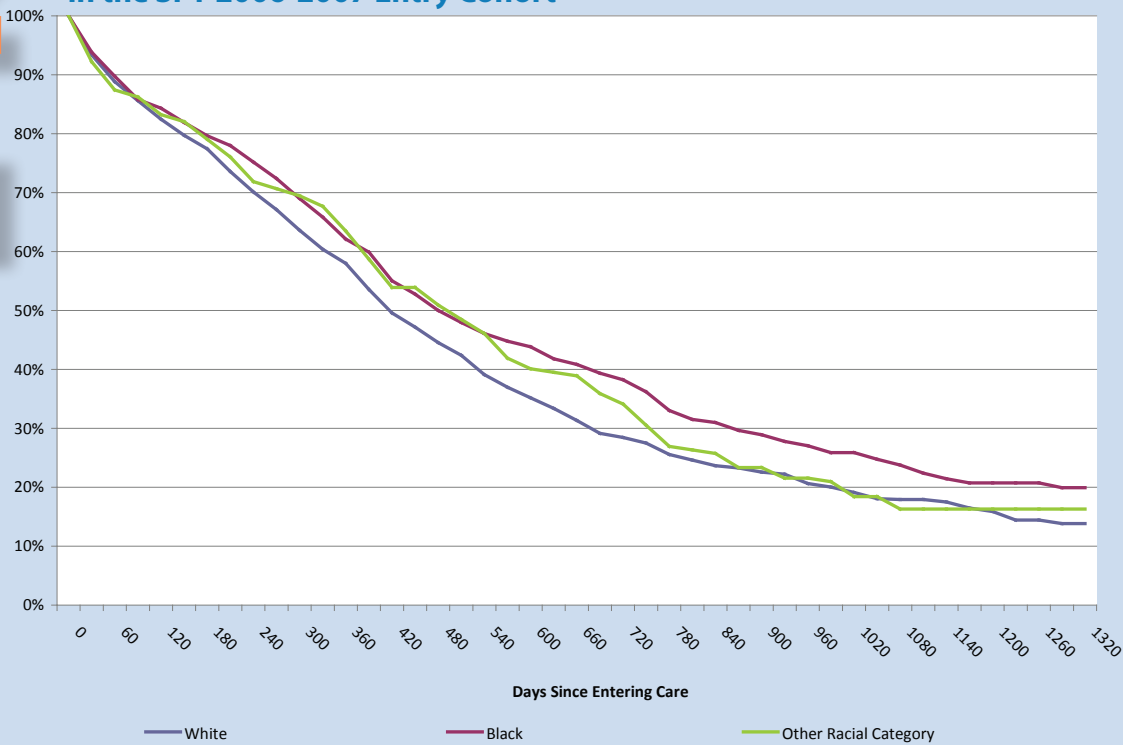


Figure 12

The Rate of Exit From Foster Care by Race for Children Age 6 to 12 in the SFY 2006-2007 Entry Cohort

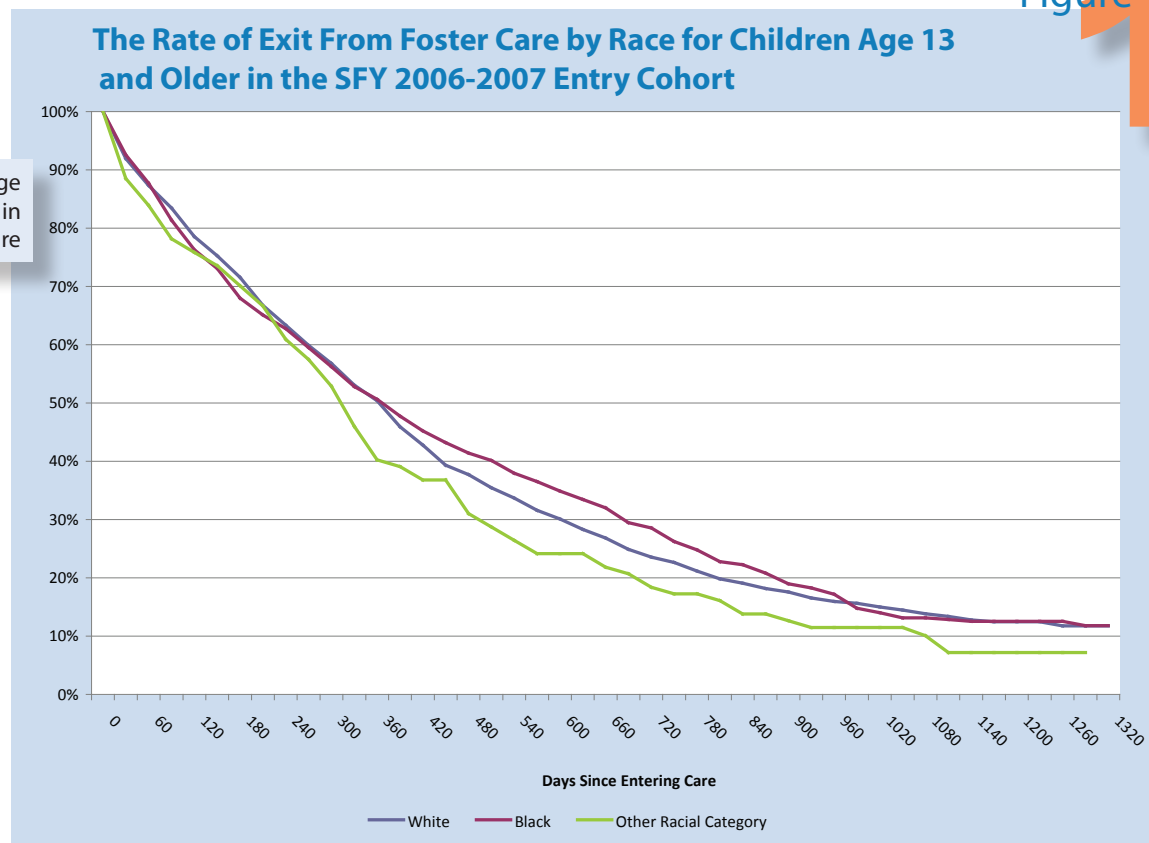
Percentage Remaining in Foster Care



children. According to the figure, 89% of the 833 white children and 90% of the 536 black children remained in care at 60 days. A slightly lower percentage of the 167 children from other racial categories—87%—also remained in care. At 180 days, 77% of the white children compared with 80% of the black children remained in care. Thirty days later—at 210 days after entry—the difference between white children and black children had increased by another percentage point—74% compared with 78%. After another thirty days, at 240 days after entry, the difference increases by an additional percentage point—70% of the white children remained in care compared with 75% for the black children. At 360 days, the difference narrows to 4 points—58% of the white children remained in care compared with 62% of the black children. According to the figure, 63% of the children from other racial classifications remained in care at that time. By 720 days, the difference between white and black children who remained in care had increased to 10 points—28% of the white children remained in care compared with 38% of the black children—while 34% of the children from other racial classifications remained in care.

The rate of exit for children from all three racial categories who entered foster care for the first time as a teen in SFY 2007-2008 is very similar as **Figure Thirteen** indicates. As the figure shows, the median length of stay for white children and black children—the point where the line tracking the exits from foster care crosses the 50% boundary—is almost the same. The difference is 3.8 days—366.6 for the 553 black youth and 362.5 for the 671 white youth. The median stay is shorter for black youth than it is for white youth. The median length of stay for the 87 youth from other racial classifications is a much lower 312.5 days. At 60 days, 87% of the white youth compared to 88% of the black youth remained in care. As the figure indicates, 84% of the youth from other

Figure 13



racial classifications were in care. At 180 days, the gap between the percentage of white youth and black youth was four points, with a higher percentage of white youth remaining in care: 72% for white youth compared to 68% for black youth. By 240 days, an equal percentage of white youth and black youth remained in care—63%—while 61% of the youth from other racial classifications were still in care. By 360 days, slightly more than 50% of the white youth were in care compared to 51% of the black youth. Only 40% of the youth from other categories were in care. At 720 days—almost two years after entering foster care—24% of the white youth remained in care, compared with 29% of the black youth and 18% of the youth from other categories.

This analysis suggests that not only is there variation across racial groups and across age groups at the rate children leave care, there is also variation in the rate of exit by race within age groups. Children and youth from different races exit care at different rates depending on their age when they entered care. While white children and youth generally leave foster care more quickly than black children and youth, white youth who enter foster care for the first time as a teen in SFY 2006-2007 left at about the same rate as black youth. The difference in the median length of stay is 3.8 days. The relatively small number of children from other racial classifications who entered foster as a teen in SFY 2006-2007 left much more quickly than either white youth or black youth. While there was little difference in the rate at which white teens and black teens left care, there was a large difference in the median length of stay for children who were under six-years-old when they entered care for the first time in SFY 2006-2007. The median length of stay for white children in this age group was 95.5 days shorter than that for black children. The under six age group accounts for more than half of all the children who entered foster care for the first time in SFY 2006-2007. Recognition of this difference is important for developing practices that address needs of children across different racial groups. The use of different strategies for different groups may result in the length of time children remain in care.



Summary

Since 2000, there has been a gradual increase in the monthly number of children with reports of maltreatment. In comparing patterns across months for the last several years, there does not appear to have been a sharp increase associated with the current economic downturn. There has been a gradual decrease in the number of reports that are classified as substantiations. That decrease is not as apparent when MRS assessments with a finding of services provided, services no longer needed are included. Also, following the implementation of MRS, there has been a gradual decrease in the combined number of assessments with a finding of unsubstantiated or services not recommended. There has been an increase in the number of cases with an MRS finding of services recommended.

There has also been variation in the number of children and youth entering foster care for the first time. The number of children entering care each month increased slightly between 2005 and 2007. Since 2007, the number of children entering care for the first time each month has fallen and has ranged between 504 in August 2007 and 335 in December 2008.

The decline in the entries to care has not been consistent across all groups. The number of African American children who entered care for the first time has declined by 511 between SFY 1997-1998 and SFY 2007-2008. At the same time, the number of white children who entered care for the first time over that time period increased by 73. The number of children with other racial classifications also increased—by 188—during that time period.

There has also been a decrease in the number of elementary school aged children who entered care for the first time between

SFY 1997-1998 and SFY 2007-2008. The number has declined by 368—from 1,693 to 1,325—during that period. The number of older children entering care for the first time during that time period also declined, but by a much smaller number. In SFY 1997-1998, there were 1,154 children age 13 to 17 who entered care for the first time. That number declined by 18, to 1,136, in SFY 2007-2008. At the same time, the number of pre-school aged children who entered care for the first time increased during that period. In SFY 1997-1998, there were 2,438 children age zero to five who entered care for the first time. By SFY 2007-2008, that number grew by 144 to 2,582 in SFY 2007-2008.

This report also examined differences in the rates of exit from foster care for children and youth who entered for the first time in SFY 2006-2007. Analysis showed that the difference between the median length of stay in care between racial groups varied within age groups. The median length of stay for white children under age six who entered care for the first time in SFY 2006-2007 was more than three months less than for black children. While the difference in the median length of stay between white children and black children between the ages of six and thirteen who entered care in SFY 2006-2007 was very close to the overall difference in the length of stay between all white and all black children and youth regardless of their age at entry, the difference is the median length of stay between white youth and black youth who entered care for the first time in that fiscal year as a teen was only 3.8 days.

Appendix A

Table 1

The Number of Children Reported As Maltreated

Month	Number of Children Reported
Jan-01	10,956
Feb-01	10,394
Mar-01	11,785
Apr-01	10,713
May-01	12,037
Jun-01	9,454
Jul-01	9,911
Aug-01	11,982
Sep-01	10,392
Oct-01	12,416
Nov-01	10,548
Dec-01	8,775
Jan-02	10,830
Feb-02	11,483
Mar-02	11,849
Apr-02	12,942
May-02	11,963
Jun-02	9,500
Jul-02	10,918
Aug-02	12,096
Sep-02	11,900
Oct-02	12,412
Nov-02	10,165
Dec-02	8,515
Jan-03	11,081
Feb-03	10,600
Mar-03	12,345
Apr-03	11,649
May-03	12,092

Jun-03	9,728
Jul-03	10,505
Aug-03	11,645
Sep-03	11,787
Oct-03	12,851
Nov-03	10,221
Dec-03	9,300
Jan-04	10,269
Feb-04	11,335
Mar-04	14,005
Apr-04	12,905
May-04	12,170
Jun-04	10,638
Jul-04	10,961
Aug-04	12,525
Sep-04	12,479
Oct-04	12,483
Nov-04	11,295
Dec-04	9,794
Jan-05	11,807
Feb-05	11,063
Mar-05	12,297
Apr-05	12,660
May-05	12,418
Jun-05	10,578
Jul-05	9,942
Aug-05	11,995
Sep-05	12,718
Oct-05	11,974
Nov-05	10,623
Dec-05	9,537
Jan-06	11,405
Feb-06	11,495
Mar-06	13,730

Apr-06	11,615
May-06	13,408
Jun-06	10,532
Jul-06	10,173
Aug-06	11,683
Sep-06	11,743
Oct-06	12,340
Nov-06	10,554
Dec-06	9,699
Jan-07	11,832
Feb-07	11,902
Mar-07	13,631
Apr-07	12,352
May-07	14,073
Jun-07	10,742
Jul-07	10,835
Aug-07	12,028
Sep-07	12,065
Oct-07	13,506
Nov-07	11,407
Dec-07	9,933
Jan-08	12,535
Feb-08	12,499
Mar-08	12,697
Apr-08	14,520
May-08	13,786
Jun-08	10,903
Jul-08	11,005
Aug-08	11,211
Sep-08	12,886
Oct-08	13,098
Nov-08	10,230
Dec-08	10,543
Jan-09	11,146
Feb-09	12,029
Mar-09	13,652
Apr-09	12,614

May-09	13,104
Jun-09	11,045
Jul-09	10,622
Aug-09	11,006
Sep-09	11,205
Oct-09	10,411
Nov-09	8,735

Table 2

The Number of Substantiations

Month	Number of Children with a Substantiated Report
Jan-01	3,158
Feb-01	3,032
Mar-01	3,271
Apr-01	3,047
May-01	3,399
Jun-01	2,924
Jul-01	3,178
Aug-01	3,486
Sep-01	3,120
Oct-01	3,432
Nov-01	2,900
Dec-01	2,428
Jan-02	2,985
Feb-02	2,977
Mar-02	2,999
Apr-02	3,484
May-02	3,279
Jun-02	2,671
Jul-02	3,253
Aug-02	3,316
Sep-02	3,280
Oct-02	3,136
Nov-02	2,609
Dec-02	2,370
Jan-03	3,119
Feb-03	2,871
Mar-03	3,144
Apr-03	3,015
May-03	3,091
Jun-03	2,611
Jul-03	2,694
Aug-03	2,964
Sep-03	3,098
Oct-03	3,178
Nov-03	2,484
Dec-03	2,289
Jan-04	2,624
Feb-04	2,882
Mar-04	3,541
Apr-04	3,312
May-04	2,985
Jun-04	2,709
Jul-04	2,847
Aug-04	3,222
Sep-04	3,148
Oct-04	2,889
Nov-04	2,718
Dec-04	2,469
Jan-05	3,017
Feb-05	2,664
Mar-05	3,092
Apr-05	3,114
May-05	2,841
Jun-05	2,730
Jul-05	2,488
Aug-05	2,984
Sep-05	2,988
Oct-05	2,756
Nov-05	2,436
Dec-05	2,219
Jan-06	2,734
Feb-06	2,730
Mar-06	2,894
Apr-06	2,641
May-06	2,879
Jun-06	2,268
Jul-06	2,372
Aug-06	2,740
Sep-06	2,568
Oct-06	2,610

Nov-06	2,183
Dec-06	2,069
Jan-07	2,435
Feb-07	2,422
Mar-07	2,697
Apr-07	2,487
May-07	2,762
Jun-07	2,284
Jul-07	2,174
Aug-07	2,414
Sep-07	2,305
Oct-07	2,455
Nov-07	2,150
Dec-07	1,935
Jan-08	2,574
Feb-08	2,279
Mar-08	2,266
Apr-08	2,618
May-08	2,418
Jun-08	1,976
Jul-08	2,213
Aug-08	2,182
Sep-08	2,397
Oct-08	2,405
Nov-08	1,838
Dec-08	1,997
Jan-09	2,218
Feb-09	2,161
Mar-09	2,504
Apr-09	2,376
May-09	2,302
Jun-09	2,008
Jul-09	2,065
Aug-09	2,206
Sep-09	2,058
Oct-09	1,893
Nov-09	1,598

Table 3

The Number of Reports by Type of Finding (Not Based on a Unique Count of Children; Some Children May Have Multiple Reports Investigated at the Same Time)

Month	Dependency	Abuse	Abuse and Neglect	Neglect	Services Needed	Services Provided, No Longer Needed	Services Recommended	Services Not Recommended	Unsubstantiated
Jan-00	39	143	89	2,342	5	0	0	3	6,090
Feb-00	58	205	130	2,903	0	0	7	0	7,879
Mar-00	52	204	102	2,907	1	0	1	0	8,725
Apr-00	29	161	125	2,419	0	0	0	0	6,491
May-00	45	167	106	2,863	0	0	0	9	8,183
Jun-00	43	172	99	2,611	4	0	0	0	6,785
Jul-00	48	136	101	2,608	0	0	0	2	6,695
Aug-00	59	156	143	2,985	0	0	0	2	8,094
Sep-00	34	173	140	2,757	6	2	1	7	7,481
Oct-00	70	171	123	2,814	0	0	1	0	8,221
Nov-00	36	145	80	2,579	0	0	1	0	6,967
Dec-00	29	141	86	2,069	0	0	0	0	5,631
Jan-01	33	156	108	2,861	0	0	0	0	7,798
Feb-01	29	161	115	2,727	0	0	0	0	7,362
Mar-01	49	159	129	2,934	0	0	1	2	8,511
Apr-01	38	134	107	2,768	0	0	0	2	7,664
May-01	47	170	113	3,069	0	0	0	2	8,636
Jun-01	42	181	113	2,587	1	0	0	1	6,529
Jul-01	51	175	109	2,843	0	0	0	0	6,733
Aug-01	60	197	120	3,109	0	0	0	0	8,496
Sep-01	44	159	98	2,819	0	0	0	0	7,272
Oct-01	46	198	100	3,088	0	0	4	3	8,977
Nov-01	37	180	80	2,602	1	0	0	4	7,644
Dec-01	43	150	78	2,157	0	0	0	2	6,345
Jan-02	56	143	99	2,687	0	0	0	9	7,836
Feb-02	39	177	98	2,651	12	0	0	10	8,496
Mar-02	41	128	121	2,709	0	0	0	1	8,849
Apr-02	52	154	105	3,173	0	0	0	0	9,458
May-02	50	155	109	2,963	2	0	4	4	8,676
Jun-02	52	144	99	2,376	0	0	4	4	6,821
Jul-02	52	136	163	2,883	19	0	0	25	7,640
Aug-02	54	141	135	2,931	55	0	38	235	8,507
Sep-02	43	171	135	2,856	75	0	42	381	8,197

Month	Dependency	Abuse	Abuse and Neglect	Neglect	Services Needed	Services Provided, No Longer Needed	Services Recommended	Services Not Recommended	Unsubstantiated
Oct-02	53	142	114	2,753	74	0	44	445	8,787
Nov-02	44	126	81	2,276	82	0	62	305	7,189
Dec-02	27	110	64	2,090	79	0	53	247	5,845
Jan-03	44	144	98	2,735	98	0	84	369	7,509
Feb-03	44	132	83	2,494	118	0	204	459	7,066
Mar-03	62	134	114	2,638	196	0	274	543	8,384
Apr-03	51	147	107	2,517	193	0	311	714	7,609
May-03	55	140	129	2,592	175	0	374	706	7,921
Jun-03	53	121	80	2,157	200	0	389	531	6,197
Jul-03	37	149	89	2,241	178	0	495	626	6,690
Aug-03	46	150	112	2,426	230	0	596	685	7,400
Sep-03	60	163	132	2,399	344	0	719	674	7,296
Oct-03	76	161	198	2,424	319	0	822	812	8,039
Nov-03	41	118	118	1,921	286	0	648	709	6,380
Dec-03	31	100	74	1,804	280	0	563	649	5,799
Jan-04	38	159	95	2,014	318	2	565	669	6,409
Feb-04	58	134	124	2,271	295	0	618	770	7,065
Mar-04	50	182	128	2,741	440	0	915	1,060	8,489
Apr-04	55	153	131	2,515	458	0	915	1,047	7,631
May-04	51	169	95	2,220	450	0	1,001	1,172	7,012
Jun-04	51	120	103	1,986	449	0	884	1,204	5,841
Jul-04	48	156	126	1,935	582	0	933	1,469	5,712
Aug-04	59	163	85	2,229	686	0	1,206	1,818	6,279
Sep-04	51	166	152	2,124	655	3	1,188	1,815	6,325
Oct-04	68	166	123	1,811	721	3	1,263	2,053	6,275
Nov-04	47	144	112	1,852	563	0	1,127	1,796	5,654
Dec-04	55	128	89	1,636	561	0	1,027	1,525	4,773
Jan-05	56	154	107	1,975	725	3	1,250	1,829	5,708
Feb-05	23	133	130	1,760	618	4	1,358	1,805	5,232
Mar-05	55	165	125	1,884	863	0	1,373	2,131	5,701
Apr-05	54	162	121	1,943	834	0	1,503	2,394	5,649
May-05	30	150	102	1,790	769	2	1,638	2,394	5,543
Jun-05	43	131	112	1,657	787	2	1,291	2,100	4,455
Jul-05	26	131	92	1,553	686	1	1,169	1,991	4,293
Aug-05	46	155	142	1,842	799	1	1,358	2,316	5,336
Sep-05	36	157	133	1,794	868	2	1,699	2,474	5,555
Oct-05	48	152	110	1,643	803	13	1,535	2,235	5,435

Month	Dependency	Abuse	Abuse and Neglect	Neglect	Services Needed	Services Provided, No Longer Needed	Services Recommended	Services Not Recommended	Unsubstantiated
Nov-05	25	125	94	1,460	732	28	1,407	1,986	4,766
Dec-05	47	110	106	1,251	705	47	1,271	1,985	4,015
Jan-06	41	136	128	1,587	842	175	1,613	2,238	4,645
Feb-06	32	120	123	1,493	962	243	1,578	2,525	4,419
Mar-06	50	173	162	1,462	1,047	355	1,991	3,362	5,128
Apr-06	44	149	154	1,246	1,048	380	1,633	2,925	4,036
May-06	81	146	164	1,333	1,155	474	1,852	3,484	4,719
Jun-06	51	85	106	1,055	971	415	1,359	2,880	3,610
Jul-06	33	99	81	1,106	1,053	420	1,374	2,868	3,139
Aug-06	51	122	105	1,245	1,217	506	1,548	3,379	3,510
Sep-06	43	111	97	1,127	1,190	546	1,688	3,474	3,467
Oct-06	41	98	101	1,136	1,234	640	1,913	3,639	3,538
Nov-06	44	89	118	939	993	578	1,575	3,268	2,950
Dec-06	31	74	55	915	994	510	1,569	2,965	2,586
Jan-07	33	110	122	1,062	1,108	667	2,016	3,604	3,110
Feb-07	31	90	126	1,017	1,158	690	1,974	3,692	3,124
Mar-07	41	105	132	1,112	1,307	736	2,284	4,493	3,421
Apr-07	36	122	136	1,001	1,192	698	2,139	4,000	3,028
May-07	49	84	116	1,091	1,422	824	2,449	4,669	3,369
Jun-07	45	97	92	848	1,202	681	1,739	3,641	2,397
Jul-07	44	84	89	936	1,021	733	1,761	3,843	2,324
Aug-07	54	98	138	922	1,202	742	2,048	4,118	2,706
Sep-07	32	71	99	840	1,263	822	2,104	4,345	2,489
Oct-07	47	74	104	833	1,397	881	2,338	4,867	2,965
Nov-07	35	92	98	739	1,186	708	1,928	4,101	2,520
Dec-07	29	79	65	722	1,040	625	1,858	3,472	2,043
Jan-08	39	84	90	923	1,438	810	2,363	4,265	2,523
Feb-08	37	89	83	807	1,263	786	2,453	4,405	2,576
Mar-08	36	74	101	874	1,181	844	2,441	4,635	2,511
Apr-08	23	99	94	948	1,454	983	2,708	5,272	2,939
May-08	30	125	73	934	1,256	912	2,616	5,238	2,602
Jun-08	29	68	102	694	1,083	641	1,873	4,322	2,091
Jul-08	24	89	63	751	1,286	754	1,912	4,068	2,058
Aug-08	16	110	87	652	1,317	731	1,940	4,313	2,045
Sep-08	23	85	84	837	1,368	963	2,360	4,915	2,251
Oct-08	37	81	97	801	1,389	983	2,308	5,002	2,400
Nov-08	45	67	101	606	1,019	710	1,879	3,898	1,905

Month	Dependency	Abuse	Abuse and Neglect	Neglect	Services Needed	Services Provided, No Longer Needed	Services Recommended	Services Not Recommended	Unsubstantiated
Dec-08	30	74	96	691	1,106	780	1,895	3,880	1,991
Jan-09	29	70	89	719	1,311	734	1,979	4,063	2,152
Feb-09	33	82	76	716	1,254	904	2,373	4,401	2,190
Mar-09	39	93	107	913	1,352	881	2,739	4,969	2,559
Apr-09	35	91	88	748	1,414	861	2,525	4,613	2,239
May-09	34	88	67	808	1,305	850	2,707	4,808	2,437
Jun-09	31	75	64	730	1,108	728	2,080	4,232	1,997
Jul-09	31	77	82	646	1,229	676	2,104	3,967	1,810
Aug-09	45	94	93	769	1,205	706	2,240	3,841	2,013
Sep-09	30	73	53	717	1,185	748	2,339	3,947	2,113
Oct-09	40	50	69	572	1,162	678	2,056	3,878	1,906
Nov-09	21	56	31	562	928	505	1,816	3,051	1,765
Dec-09	23	43	31	424	788	471	1,433	2,710	1,386